

PUMP INFORMATION

Type: ☐ Sump Pump(s)
☐ Grinder Pump(s)
☐ Non-Clog Pump(s)

Model NO: _____

Rating: _____ GPM _____ TDH

Motor: _____ HP _____ RPM

Elec: _____ PH _____ HZ _____ v

Elec: _____ FL AMPS

DISCHARGE PIPE

☐ 304 Stainless Steel
☐ Sch40 Galvanized Steel
☐ Sch80 PVC Pipe

☐ 1 1/4"

☐ 1 1/2"

☐ 2"

☐ 3"

Anti-Floatation Flange
☐ Fiberglass Encapsulated
 ASTM A-36 Square Steel
☐ Round Fiberglass
☐ None

3/16" Lifting Chain

☐ 304 Stainless Steel

☐ Galvanized Steel

* Stainless Steel Cable
 is Available

ELEV

NPT Electrical Coupling
☐ Enameled Steel
☐ Stainless Steel

304 Stainless Steel
 Float Bracket
 w/ (4) Cord Grips
☐ Floats

Cast Iron Inlet Hub
 (Different Sizes and
 Types Available)

INV ELEV

ELEV
 HIGH LEVEL ALARM

ELEV
 PUMP #2 ON

ELEV
 PUMP #1 ON

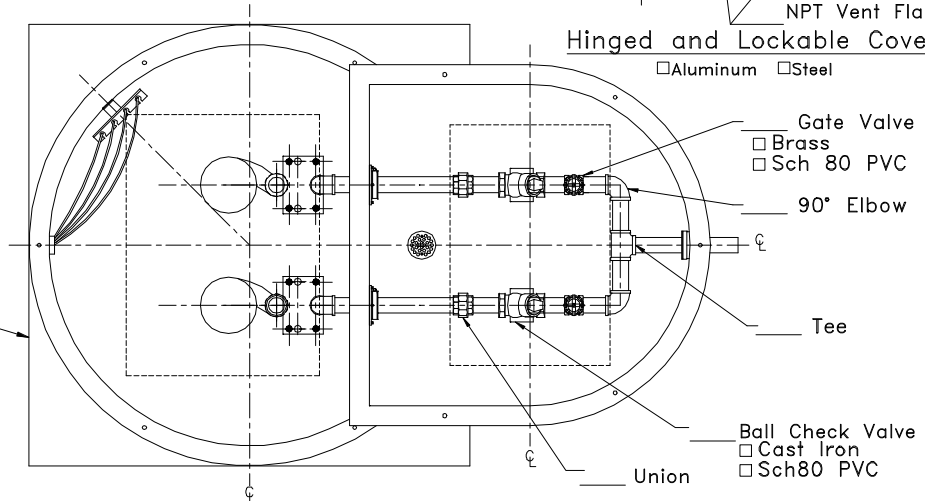
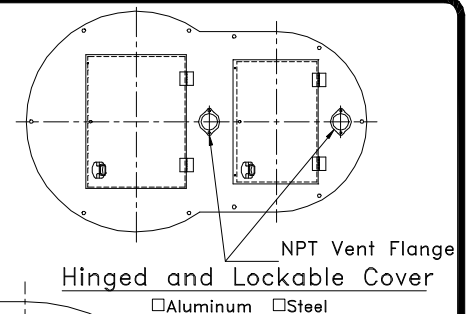
ELEV
 PUMP OFF

ELEV

3"

3"

- ☐ EZ2125 - 1 1/4" Lift-Out Coupling
- ☐ EZ2150 - 1 1/2" Lift-Out Coupling
- ☐ EZ2200 - 2" Lift-Out Coupling
- ☐ EZ3320 - 3" Lift-Out Coupling For 2" Pump
- ☐ EZ3300 - 3" Lift-Out Coupling



Green Vent

INV ELEV

12" Min.

Flexible Entry Boot

Valvebox Drain
 With PVC Check Valve

Discharge Pipe

☐ 304 Stainless Steel
☐ Sch40 Galvanized Steel
☐ Sch80 PVC Pipe

3/4" Guiderail

☐ 304 Stainless Steel
☐ Sch40 Galvanized Steel

NPT Coupling

☐ 304 Stainless Steel
☐ Sch40 Galvanized Steel
☐ Sch80 PVC Pipe

INDUSTRIES
TOPP
 INCORPORATED

EZ-Out Prefabricated
 Fiberglass Lift Station

1 1/4" - 3" Duplex EZ-Out
 With Flatwall Valvebox

Highway 25 North P.O. Box 420
 Rochester, IN 46975
 Phone: 800/354-4534 Fax: 574/223-6106

Scale: None

Drawn By: RM

App'd By: .

Date: 04/21/03

Supersedes Prints
 Prior To: 05/09/03

This print is and contains confidential proprietary information owned exclusively by TOPP INDUSTRIES, INC. It is furnished on a strictly confidential basis. This restriction includes, but is not limited to the condition that this print will not only be used as a record or to identify or inspect parts or for other information purposes and will not be used to manufacture or procure the manufacture of the items shown in this print by any other source than TOPP INDUSTRIES, INC.

Reference No: 16785

Revisions

A	First Released.

PUMP INFORMATION

Type: ☐ Sump Pump(s)
☐ Grinder Pump(s)
☐ Non-Clog Pump(s)

Model NO: _____

Rating: _____ GPM _____ TDH

Motor: _____ HP _____ RPM

Elec: _____ PH _____ HZ _____ v

Elec: _____ FL AMPS

DISCHARGE PIPE

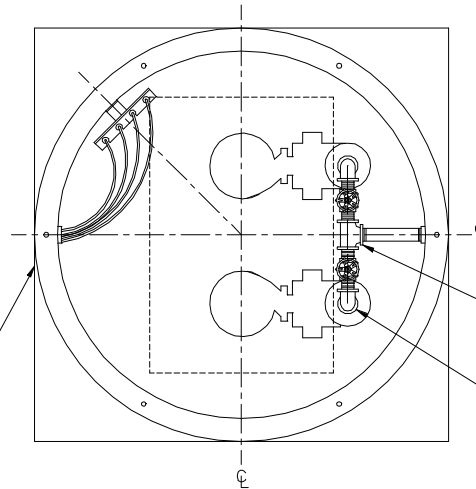
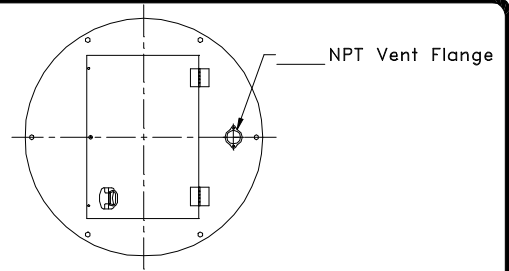
☐ 304 Stainless Steel
☐ Sch40 Galvanized Steel
☐ Sch80 PVC Pipe

☐ 1 1/4"
☐ 2"
☐ 3"

Anti-Floatation Flange
☐ Fiberglass Encapsulated
 ASTM A-36 Steel
☐ Round Fiberglass
☐ None

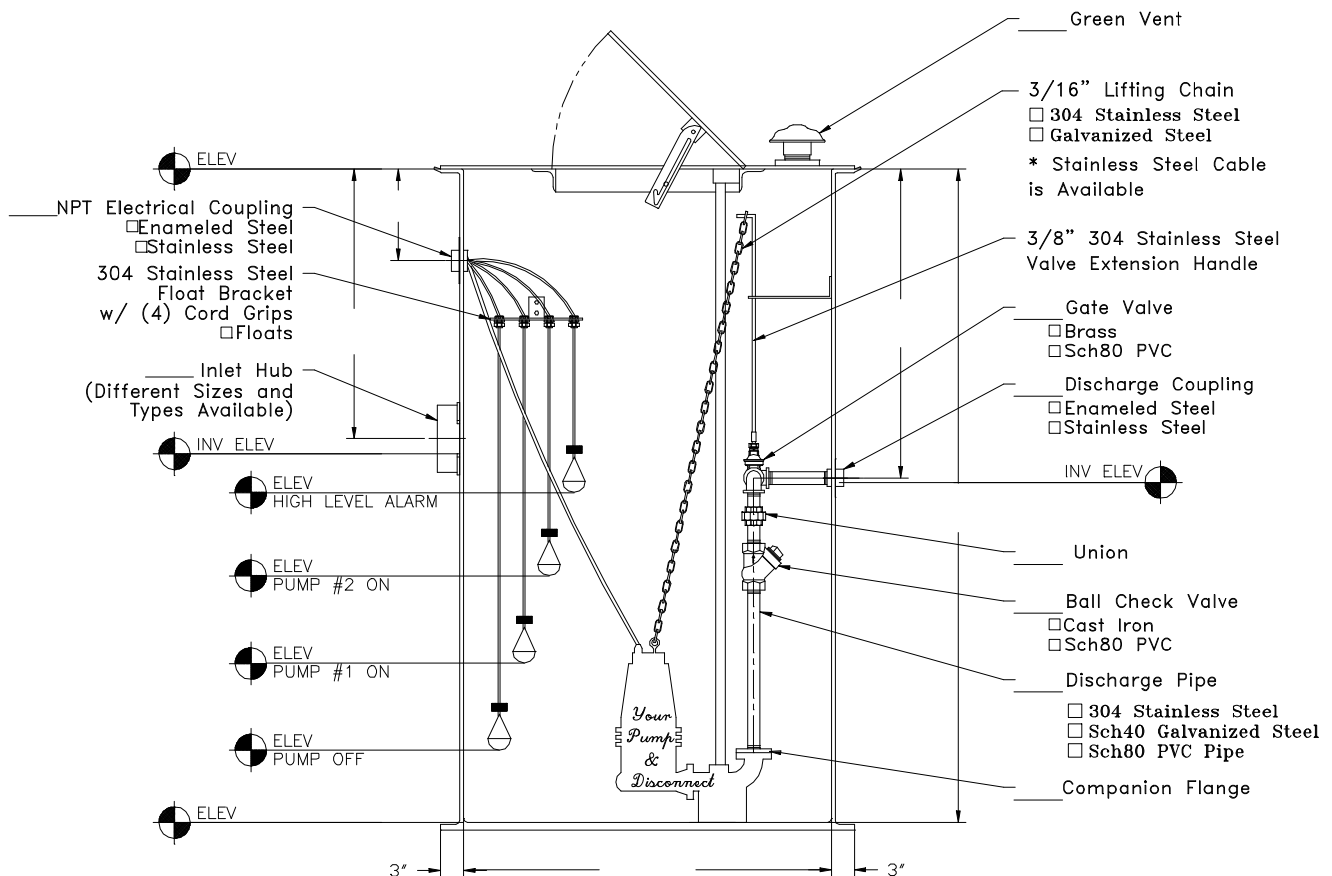
Hinged and Lockable Cover

☐ Fiberglass ☐ Aluminum ☐ Steel



Tee

90° Elbow



INDUSTRIES
TOPP
 INCORPORATED

Prefabricated Fiberglass
 Duplex Lift Station

Reference: Duplex Base Elbow
 Side Discharge

Highway 25 North P.O. Box 420
 Rochester, IN 48975
 Phone: 800/354-4534 Fax: 574/223-6106

Scale: None

Drawn By: RM

App'd By: .

Date: 05/16/03

Supersedes Prints

Prior To: 05/16/03

This print is and contains confidential proprietary information owned exclusively by TOPP INDUSTRIES, INC. It is furnished on a strictly confidential basis. This restriction includes, but is not limited to the condition that this print will not only be used as a record or to identify or inspect parts or for other information purposes and will not be used to manufacture or procure the manufacture of the items shown in this print by any other source than TOPP INDUSTRIES, INC.

Reference
 No:

10101

Revisions

(A)	First Released.

PUMP INFORMATION

Type: ☐ Sump Pump(s)

☐ Grinder Pump(s)

☐ Non-Clog Pump(s)

Model NO: _____

Rating: _____ GPM _____ TDH

Motor: _____ HP _____ RPM

Elec: _____ PH _____ HZ _____ V

Elec: _____ FL AMPS

DISCHARGE PIPE

☐ 304 Stainless Steel

☐ Sch40 Galvanized Steel

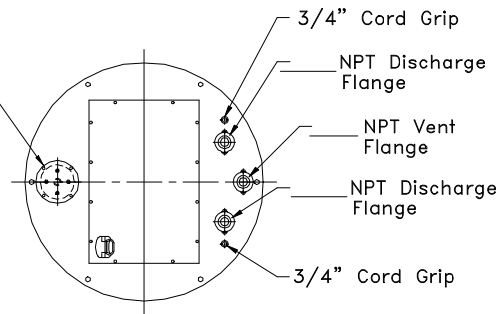
☐ Sch80 PVC Pipe

☐ 1 1/4"

☐ 2"

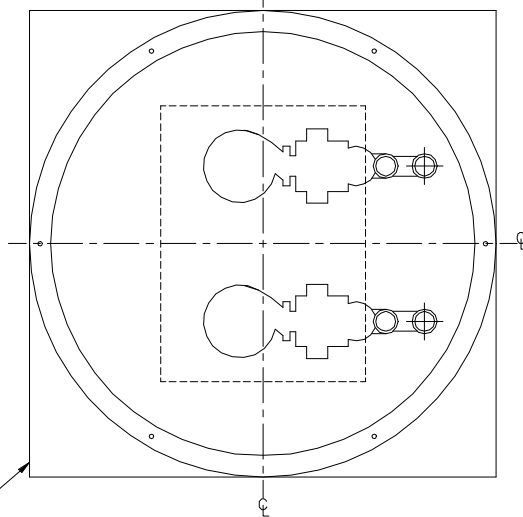
☐ 3"

Inspection Plate
with (4) 1 1/2" Cord Grips and
1" Coupling



Gas Tight Hatch Cover

☐ Fiberglass ☐ Aluminum ☐ Steel



Anti-Floatation Flange

☐ Fiberglass Encapsulated

ASTM A-36 Square Steel

☐ Round Fiberglass

☐ None

Discharge Pipe

☐ 304 Stainless Steel

☐ Sch40 Galvanized Steel

☐ Sch80 PVC Pipe

3/16" Lifting Chain

☐ 304 Stainless Steel

☐ Galvanized Steel

* Stainless Steel Cable
is Available

Guiderail

☐ Sch40 Galvanized

☐ 304 Stainless Steel

45° Elbows

Companion Flange

ELEV

1" Float Pole

☐ 304 Stainless Steel

☐ Sch40 Galvanized Steel

☐ Sch80 PVC Pipe

Cast Iron Inlet Hub
(Different Sizes and
Types Available)

INV ELEV

ELEV
HIGH LEVEL ALARM

ELEV
PUMP #2 ON

ELEV
PUMP #1 ON

ELEV
PUMP OFF

ELEV

3"

3"

INDUSTRIES
TOPP
INCORPORATED

Prefabricated Fiberglass
Duplex Lift Station

Reference: Duplex Base Elbow
Top Discharge

Highway 25 North P.O. Box 420
Rochester, IN 46975
Phone: 800/354-4534 Fax: 574/223-6106

Scale: None

Drawn By: RM

App'd By: .

Date: 05/16/03

Supersedes Prints
Prior To: 05/16/03

This print is and contains confidential proprietary information owned exclusively by TOPP INDUSTRIES, INC. It is furnished on a strictly confidential basis. This restriction includes, but is not limited to the condition that this print will not only be used as a record or to identify or inspect parts or for other information purposes and will not be used to manufacture or procure the manufacture of the items shown in this print by any other source than TOPP INDUSTRIES, INC.

Reference
No: 10146

Revisions

①	First Released.

PUMP INFORMATION

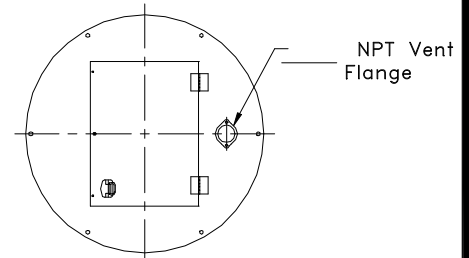
Type: ☐ Sump Pump(s)
☐ Grinder Pump(s)
☐ Non-Clog Pump(s)

Model NO: _____
 Rating: _____ GPM _____ TDH
 Motor: _____ HP _____ RPM
 Elec: _____ PH _____ HZ _____ v
 Elec: _____ FL AMPS

DISCHARGE PIPE

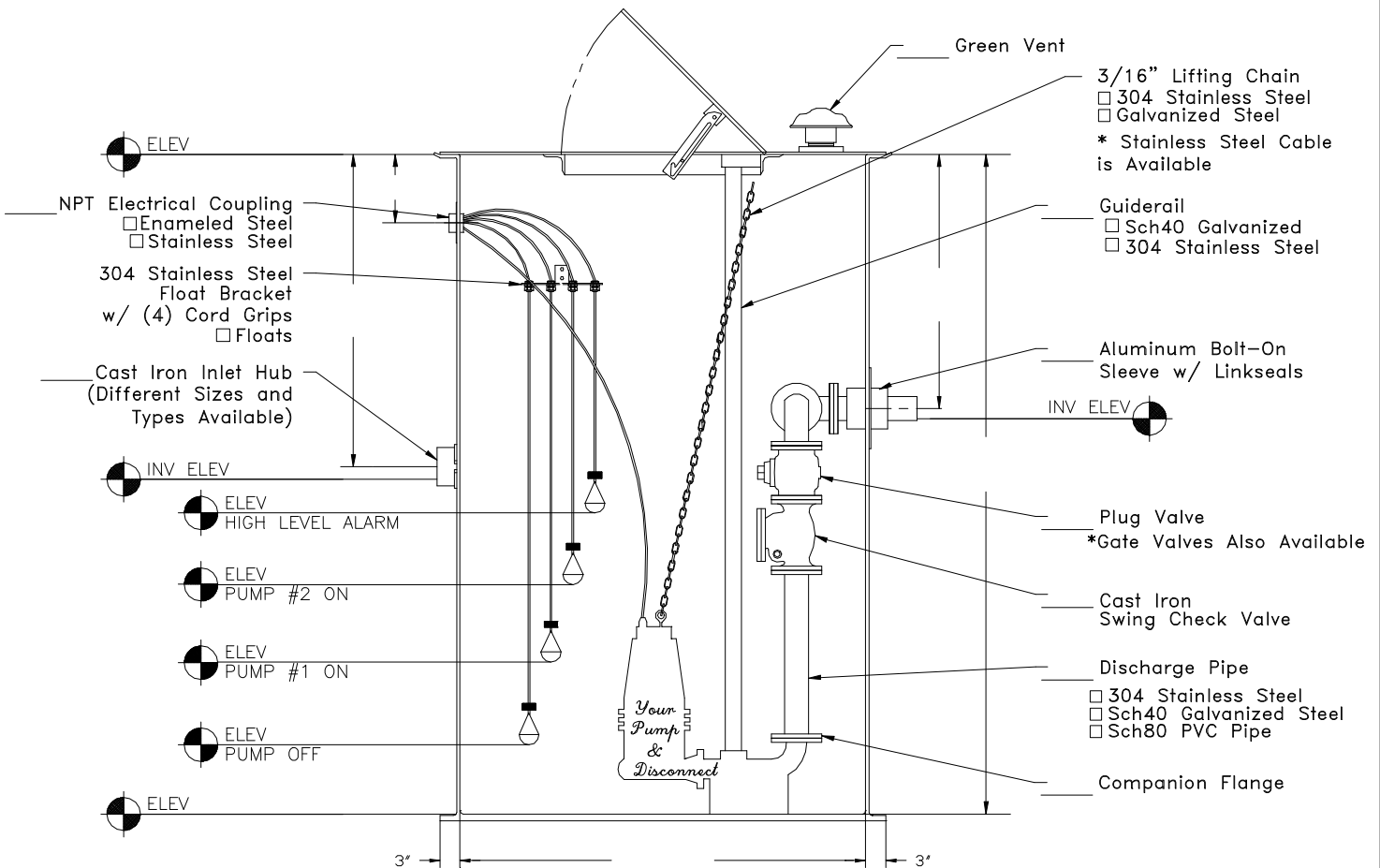
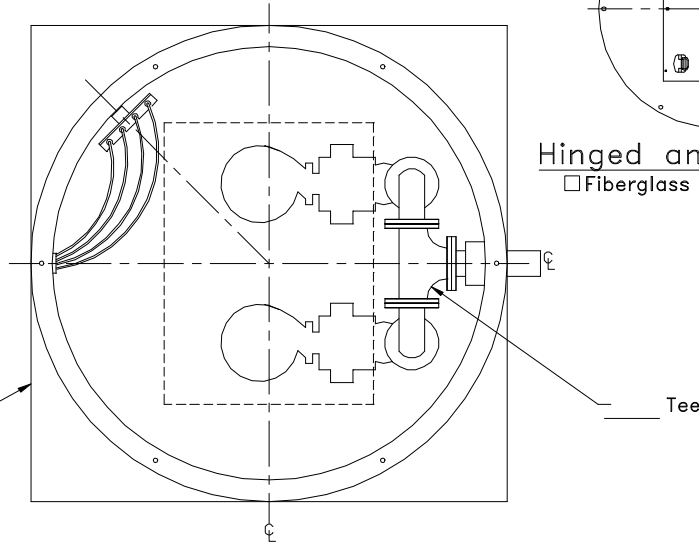
☐ 304 Stainless Steel
☐ Sch40 Galvanized Steel
☐ Sch80 PVC Pipe
☐ 3"
☐ 4"

Anti-Floatation Flange
☐ Fiberglass Encapsulated
 ASTM A-36 Steel
☐ Round Fiberglass
☐ None



Hinged and Lockable Cover

☐ Fiberglass ☐ Steel ☐ Aluminum



INDUSTRIES
TOPP
 INCORPORATED

Prefabricated Fiberglass
 Duplex Lift Station

Reference: 3"-4" Duplex Base Elbow
 Side Discharge

Highway 25 North P.O. Box 420
 Rochester, IN 46975
 Phone: 800/354-4594 Fax: 574/223-6106

Scale: None

Drawn By: RM

App'd By: .

Date: 05/16/03

Supersedes Prints
 Prior To: 05/16/03

This print is and contains confidential proprietary information owned exclusively by TOPP INDUSTRIES, INC. It is furnished on a strictly confidential basis. This restriction includes, but is not limited to the condition that this print will not only be used as a record or to identify or inspect parts or for other information purposes and will not be used to manufacture or procure the manufacture of the items shown in this print by any other source than TOPP INDUSTRIES, INC.

Reference No: 10147

Revisions

(A)	First Released.

PUMP INFORMATION

Type: ☐ Sump Pump(s)
☐ Grinder Pump(s)
☐ Non-Clog Pump(s)

Model NO: _____
 Rating: _____ GPM _____ TDH
 Motor: _____ HP _____ RPM
 Elec: _____ PH _____ HZ _____ v
 Elec: _____ FL AMPS

DISCHARGE PIPE

☐ Sch40 Galvanized Steel
☐ Sch80 PVC
☐ Ductile Iron
☐ 3"
☐ 4"

Anti-Floatation Flange
 Fiberglass Encapsulated
 ASTM A-36 Steel

3/16" Lifting Chain
☐ 304 Stainless Steel
☐ Galvanized Steel
 * Stainless Steel Cable
 is Available

ELEV
 NPT Electrical
 Coupling
☐ Enameled Steel
☐ Stainless Steel

304 Stainless Steel
 Float Bracket
 w/ (4) Cord Grips
☐ Floats

Cast Iron
 Inlet Hub
 (Different Sizes and
 Types Available)

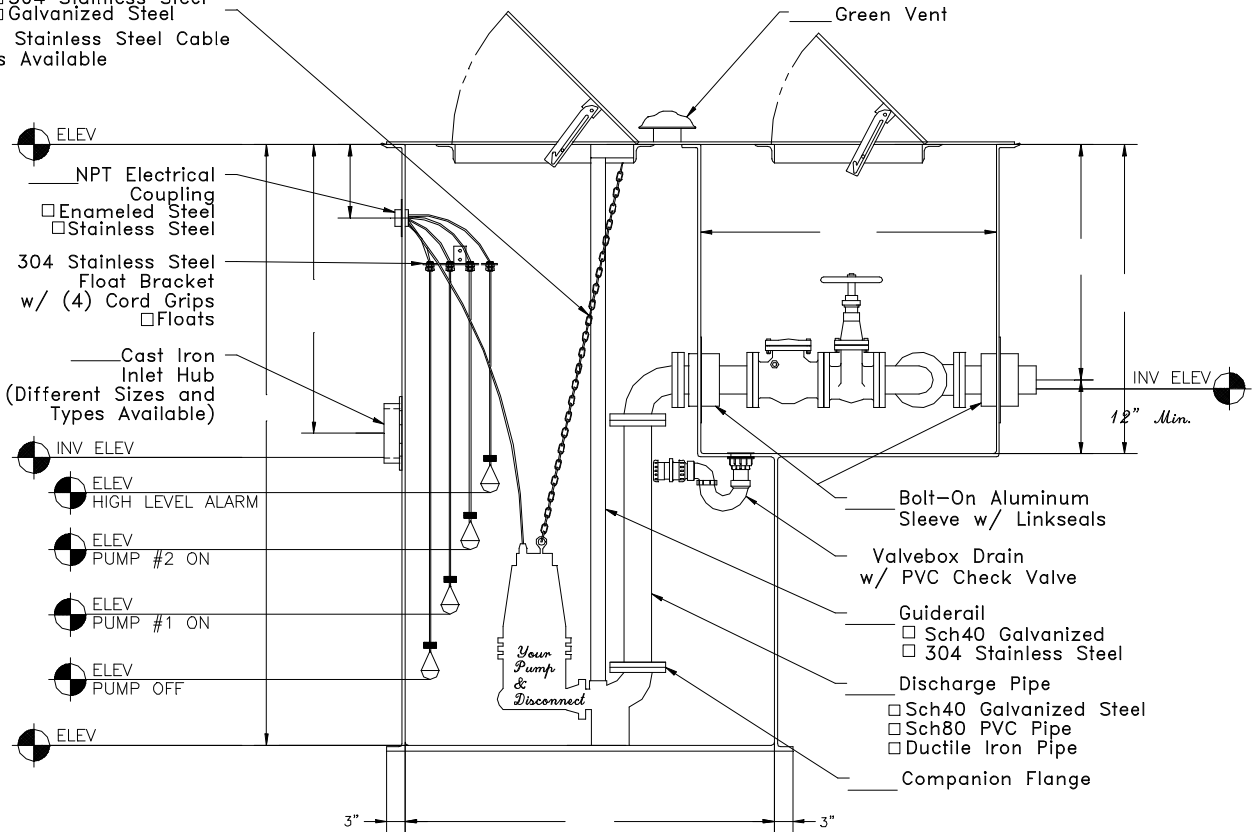
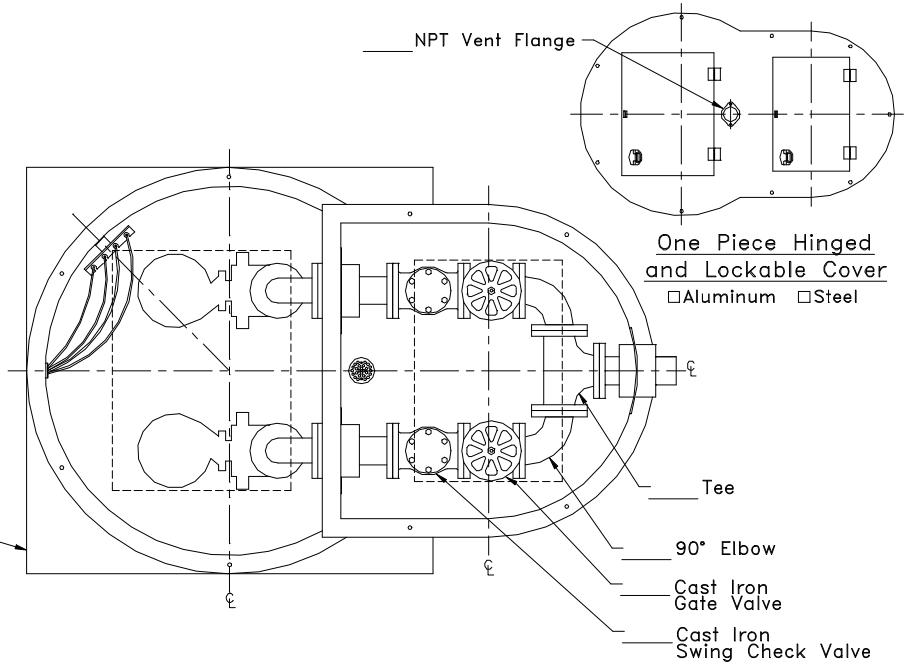
INV. ELEV
 ELEV
 HIGH LEVEL ALARM

ELEV
 PUMP #2 ON

ELEV
 PUMP #1 ON

ELEV
 PUMP OFF

ELEV



INDUSTRIES
TOPP
 INCORPORATED

Prefabricated Fiberglass
 Duplex Lift Station
 Reference: Flanged Duplex with
 Flatwall Valvebox

Highway 25 North P.O. Box 420
 Rochester, IN 46975
 Phone: 800/354-4534 Fax: 574/223-6106

Scale: None
 Drawn By: RM
 App'd By: _____
 Date: 05/19/03

Supersedes Prints
 Prior To: 05/19/03

This print is and contains confidential proprietary information owned exclusively
 by TOPP INDUSTRIES, INC. It is furnished on a strictly confidential basis. This
 restriction indicates, but is not limited to the condition that the print will not only
 be used as a record or to identify or inspect parts or for other information purposes
 and will not be used to manufacture or procure the manufacture of the items shown
 in this print by any other source than TOPP INDUSTRIES, INC.

Reference
 No: 11088

Revisions

A	First Released.

PUMP INFORMATION

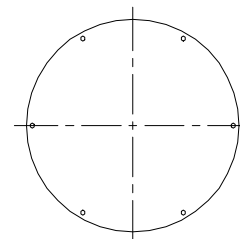
Type: ☐ Sump Pump(s)
☐ Grinder Pump(s)
☐ Non-Clog Pump(s)

Model NO: _____
 Rating: _____ GPM _____ TDH
 Motor: _____ HP _____ RPM
 Elec: _____ PH _____ HZ _____ v
 Elec: _____ FL AMPS

DISCHARGE PIPE

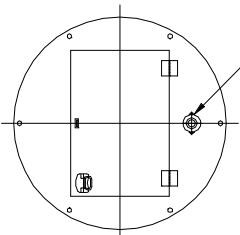
☐ 304 Stainless Steel
☐ Sch40 Galvanized Steel
☐ Sch80 PVC Pipe
☐ 1 1/4"
☐ 2"

Anti-Floatation Flange
☐ Fiberglass Encapsulated
 ASTM A-36 Steel
☐ Round Fiberglass
☐ None



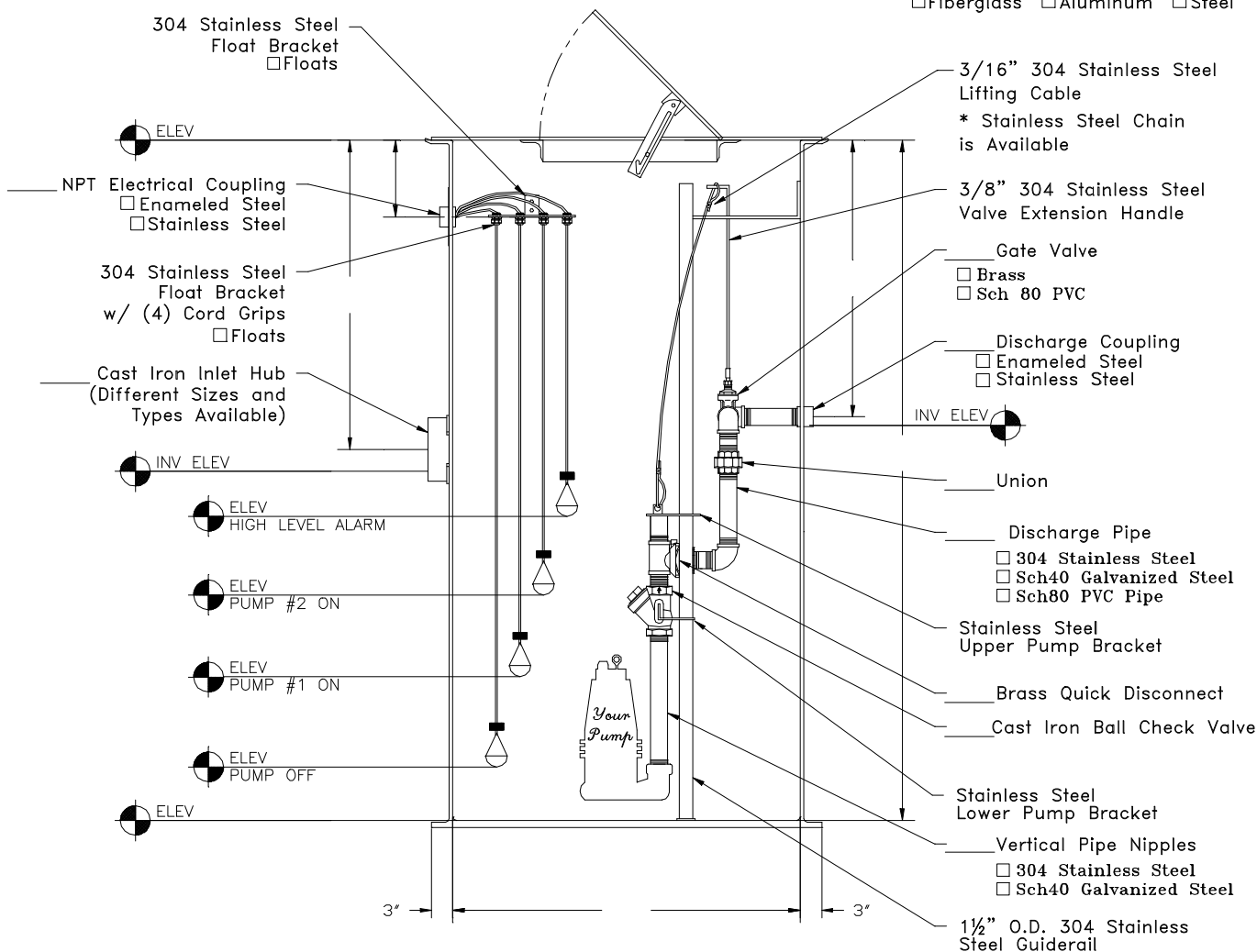
Solid Cover

☐ Fiberglass
☐ Steel



Hinged and Lockable Cover

☐ Fiberglass ☐ Aluminum ☐ Steel



INDUSTRIES
TOPP
 INCORPORATED

Prefabricated Fiberglass
 Lift Station

Reference: Duplex SGR
 Elevated Discharge

Highway 25 North P.O. Box 420
 Rochester, IN 46975
 Phone: 800/354-4534 Fax: 574/223-6106

Scale: None

Drawn By: RM

App'd By: .

Date: 05/16/03

Supersedes Prints

Prior To: 05/16/03

This print is and contains confidential proprietary information owned exclusively by TOPP INDUSTRIES, INC. It is furnished on a strictly confidential basis. This restriction includes, but is not limited to the condition that this print will not only be used as a record or to identify or inspect parts or for other information purposes and will not be used to manufacture or procure the manufacture of the items shown in this print by any other source than TOPP INDUSTRIES, INC.

Reference No: 11089

Revisions

(A)	First Released.

PUMP INFORMATION

Type: ☐ Sump Pump(s)
☐ Grinder Pump(s)
☐ Non-Clog Pump(s)

Model NO: _____
 Rating: _____ GPM _____ TDH
 Motor: _____ HP _____ RPM
 Elec: _____ PH _____ HZ
 Elec: _____ FL AMPS _____ V

DISCHARGE PIPE

☐ 304 Stainless Steel
☐ Sch40 Galvanized Steel
☐ Sch80 PVC Pipe
☐ 1 1/4"
☐ 2"

Anti-Floatation Flange
 Fiberglass Encapsulated
 ASTM A-36 Steel

3/16" 304 Stainless Steel
 Lifting Cable
 * Stainless Steel Chain
 is Available

NPT Electrical Coupling
☐ Enameled Steel
☐ Stainless Steel

304 Stainless Steel
 Float Bracket
 w/ (4) Cord Grips
☐ Floats

304 Stainless Steel
 Upper Pump Bracket

Cast Iron Inlet Hub
 (Different Sizes and
 Types Available)

INV ELEV
 ELEV
 HIGH LEVEL ALARM

ELEV
 PUMP #2 ON

ELEV
 PUMP #1 ON

ELEV
 PUMP OFF

ELEV

3"

Green Vent

Industrial Enameled Steel
 Discharge Coupling
 Valvebox Drain
 w/ PVC Check Valve

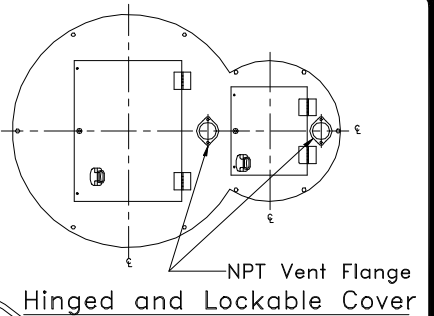
Discharge Pipe
☐ 304 Stainless Steel
☐ Sch40 Galvanized Steel
☐ Sch80 PVC Pipe

Brass Quick Disconnect

Vertical Pipe Nipple
☐ 304 Stainless Steel
☐ Sch40 Galvanized Steel
☐ Sch80 PVC Pipe

1 1/2" O.D. 304 Stainless
 Steel Guiderail

304 Stainless Steel
 Lower Pump Bracket



NPT Vent Flange
 Hinged and Lockable Cover

☐ Aluminum ☐ Steel

Tee

90° Elbow

Gate Valve

☐ Brass
☐ Sch 80 PVC

Ball Check Valve

☐ Cast Iron
☐ Sch80 PVC

Union

12" Min.

INV ELEV

Your Pump

TOPP
 INDUSTRIES
 INCORPORATED

Prefabricated Fiberglass
 SGR Lift Station

Reference: Duplex SGR
 Cylindrical Valvebox

Highway 25 North P.O. Box 420
 Rochester, IN 46975
 Phone: 800/354-4534 Fax: 574/223-6106

Scale: None

Drawn By: RM

App'd By: .

Date: 05/19/03

Supersedes Prints
 Prior To: 05/19/03

This print is and contains confidential proprietary information owned exclusively by TOPP INDUSTRIES, INC. It is furnished on a strictly confidential basis. This restriction includes, but is not limited to the condition that this print will not only be used as a record or to identify or inspect parts or for other information purposes and will not be used to manufacture or procure the manufacture of the items shown in this print by any other source than TOPP INDUSTRIES, INC.

Reference No: 11091

Revisions

Ⓐ	First Released.

PUMP INFORMATION

Type: ☐ Sump Pump(s)
☐ Grinder Pump(s)
☐ Non-Clog Pump(s)

Model NO.: _____

Rating: _____ GPM _____ TDH

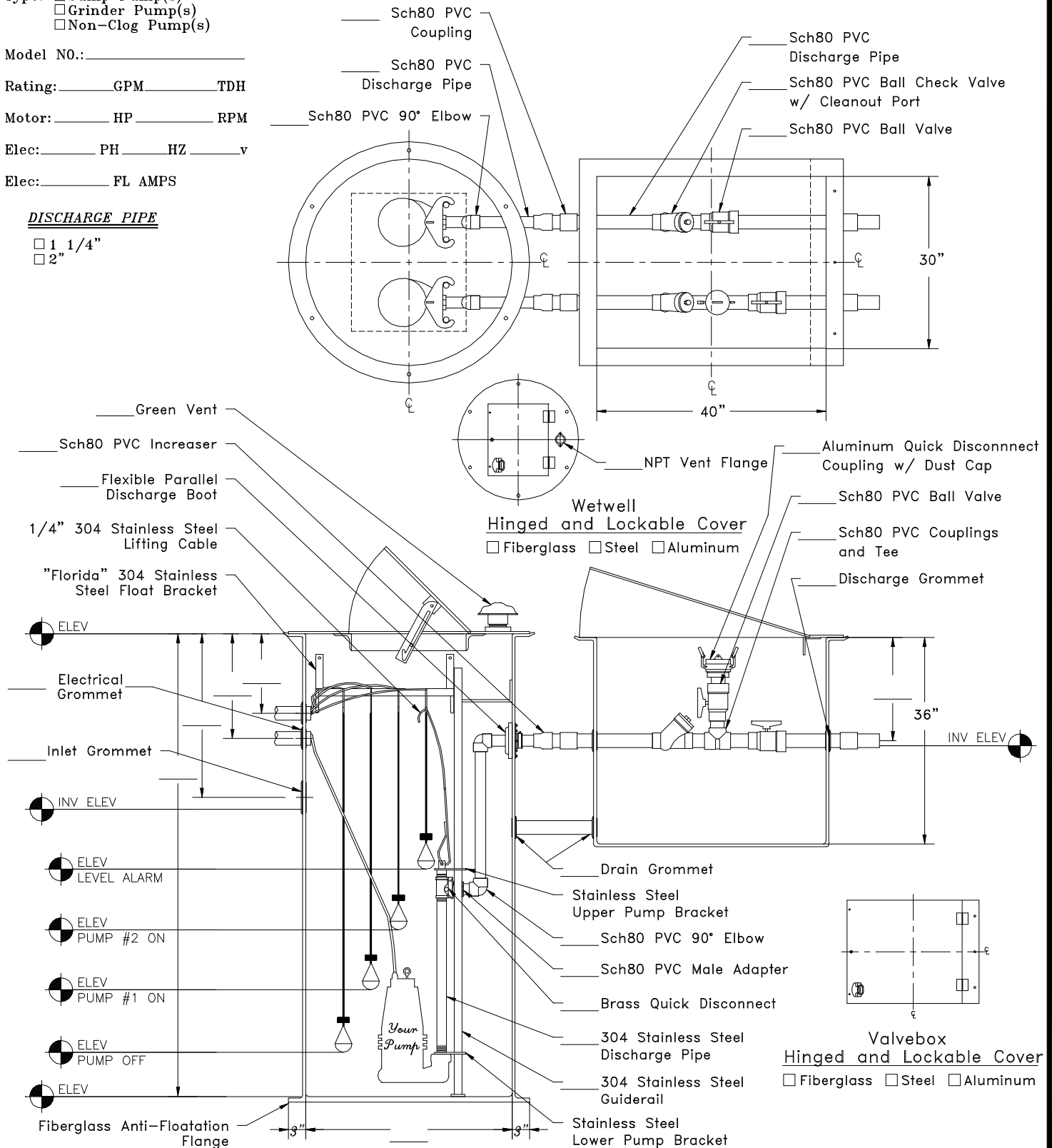
Motor: _____ HP _____ RPM

Elec: _____ PH _____ HZ _____ v

Elec: _____ FL AMPS

DISCHARGE PIPE

☐ 1 1/4"
☐ 2"



INDUSTRIES
TOPP
 INCORPORATED

Prefabricated Fiberglass
 Lift Station
 Reference: Duplex SGR
 Unattached Valvebox

Rochester, IN 46975
 Phone: 800/354-4534 Fax: 574/223-6106

Scale: None
 Drawn By: RM
 App'd By:
 Date: 06/27/03

Supersedes Prints
 Prior To: 06/27/03

This print is and contains confidential proprietary information owned exclusively by TOPP INDUSTRIES, INC. It is furnished on a strictly confidential basis. This restriction includes, but is not limited to the condition that this print will not only be used as a record or to identify or inspect parts or for other information purposes and will not be used to manufacture or procure the manufacture of the items shown in this print by any other source than TOPP INDUSTRIES, INC.

Reference No: 12791

Revisions

①	First Released.

PUMP INFORMATION

Type: ☐ Sump Pump(s)
☐ Grinder Pump(s)
☐ Non-Clog Pump(s)

Model NO: _____

Rating: _____ GPM _____ TDH

Motor: _____ HP _____ RPM

Elec: _____ PH _____ HZ _____ v

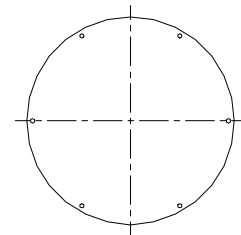
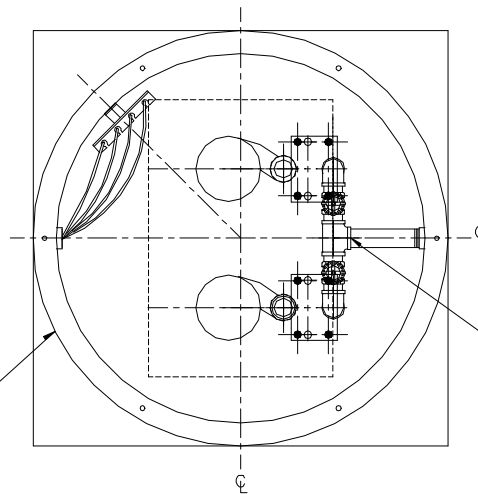
Elec: _____ FL AMPS

DISCHARGE PIPE

☐ 304 Stainless Steel
☐ Sch40 Galvanized Steel
☐ Sch80 PVC Pipe

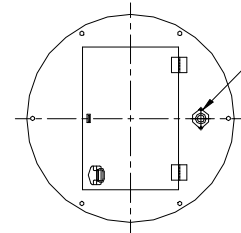
☐ 1 1/4"
☐ 1 1/2"
☐ 2"
☐ 3"

Anti-Floatation Flange
☐ Fiberglass Encapsulated
 ASTM A-36 Steel
☐ Round Fiberglass
☐ None



Solid Cover

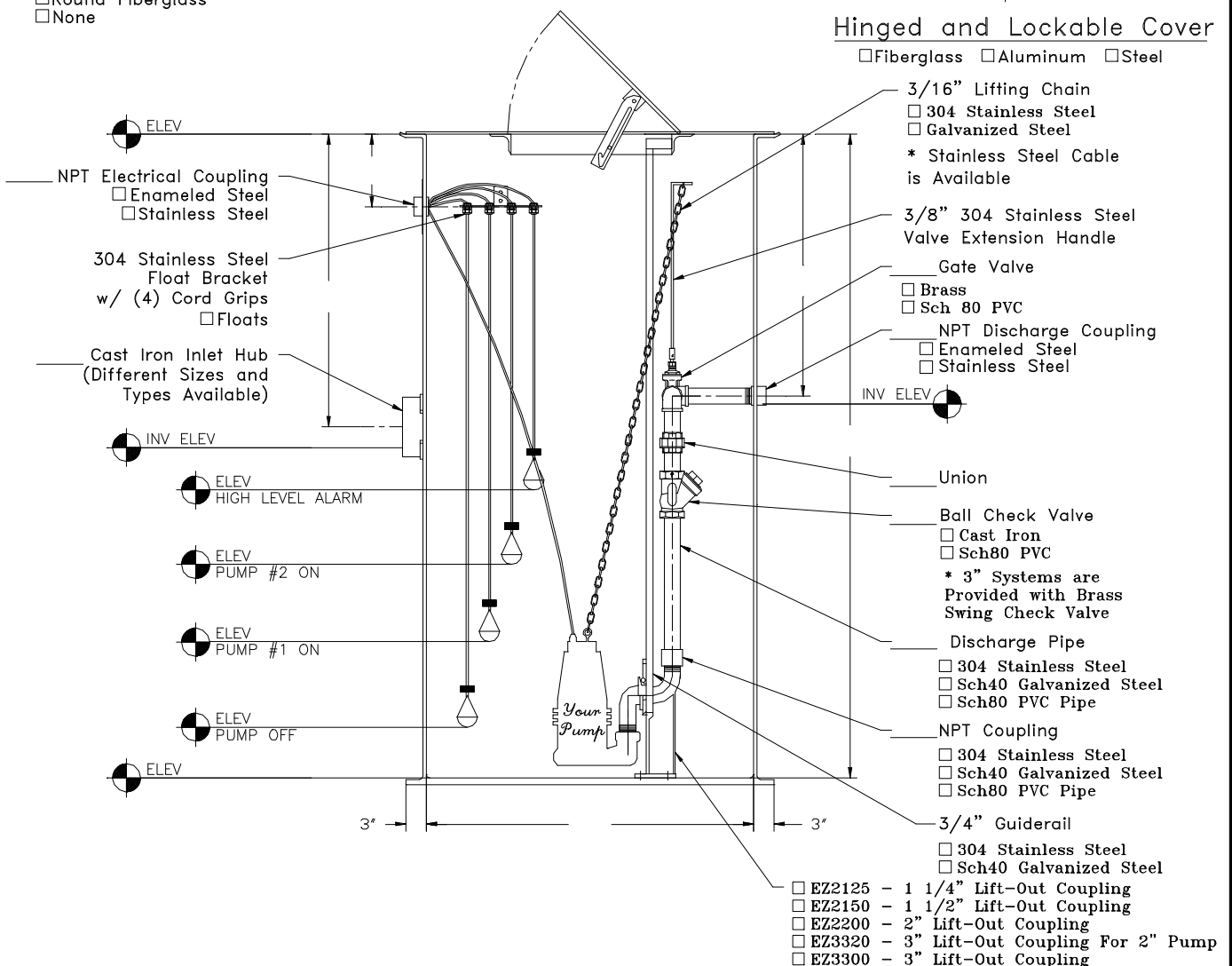
☐ Fiberglass
☐ Steel



Vent Flange

Hinged and Lockable Cover

☐ Fiberglass ☐ Aluminum ☐ Steel



INDUSTRIES
TOPP
 INCORPORATED

**EZ-Out Prefabricated
 Fiberglass Lift Station**

Duplex - Side Discharge

Scale: None

Drawn By: RM

App'd By: .

Date: 04/21/03

This print is and contains confidential proprietary information owned exclusively by TOPP INDUSTRIES, INC. It is furnished on a strictly confidential basis. This restriction includes, but is not limited to the condition that this print will not only be used as a record or to identify or inspect parts or for other information purposes and will not be used to manufacture or procure the manufacture of the items shown in this print by any other source than TOPP INDUSTRIES, INC.

Highway 25 North P.O. Box 420
 Rochester, IN 46975
 Phone: 800/354-4534 Fax: 574/223-6106

Supersedes Prints
 Prior To: 04/21/03

Reference
 No: 16734

Revisions

Rev	Description
1	First Released.

PUMP INFORMATION

Type: ☐ Sump Pump(s)
☐ Grinder Pump(s)
☐ Non-Clog Pump(s)

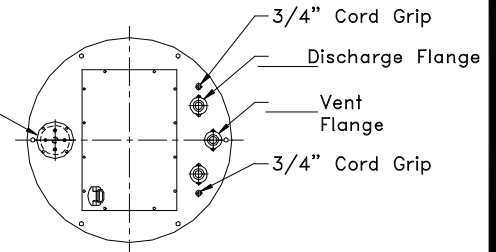
Model NO: _____
Rating: _____ GPM _____ TDH
Motor: _____ HP _____ RPM
Elec: _____ PH _____ HZ _____ v
Elec: _____ FL AMPS

DISCHARGE PIPE

☐ 304 Stainless Steel
☐ Sch40 Galvanized Steel
☐ Sch80 PVC Pipe
☐ 1 1/4"
☐ 1 1/2"
☐ 2"
☐ 3"

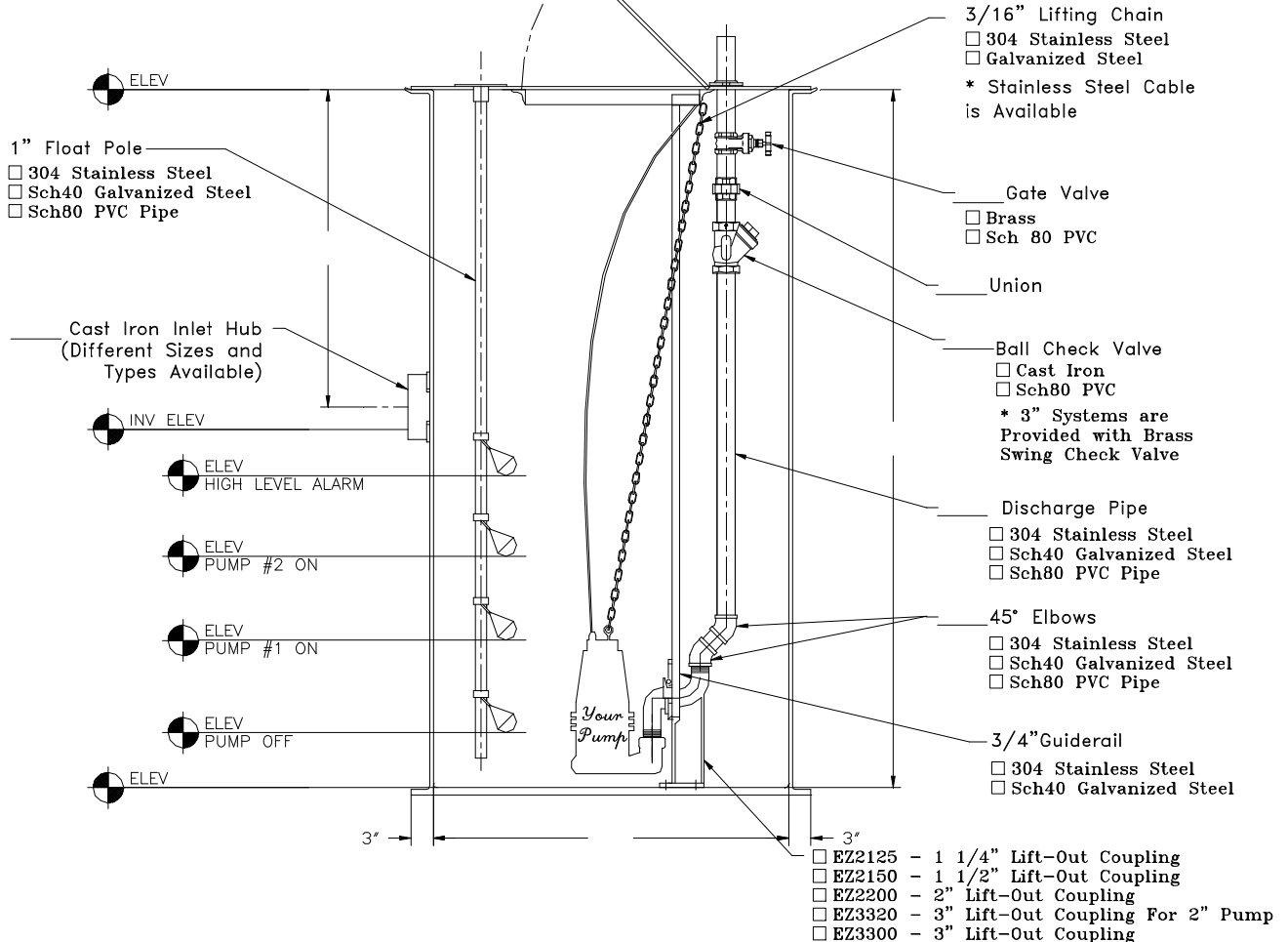
Anti-Floatation Flange
☐ Fiberglass Encapsulated
ASTM A-36 Steel
☐ Round Fiberglass
☐ None

Inspection Plate
with (4) 1/2" Cord Grips and
1" Coupling



Gas Tight Hatch Cover

☐ Fiberglass ☐ Aluminum ☐ Steel



TOPP
INDUSTRIES
INCORPORATED

EZ-Out Prefabricated
Fiberglass Lift Station
Duplex - Top Discharge
With Valves

Highway 25 North P.O. Box 420
Rochester, IN 46975
Phone: 800/354-4534 Fax: 574/223-6106

Scale: None
Drawn By: KM
App'd By: _____
Date: 04/21/03

Supersedes Prints
Prior To: 04/21/03

This print is and contains confidential proprietary information owned exclusively
by TOPP INDUSTRIES, INC. It is furnished as a strictly confidential loan. This
restriction includes, but is not limited to the condition that this print will not only
be used as a record or to identify or inspect parts or for other information purposes
and will not be used to manufacture or procure the manufacture of the items shown
in this print by any other source than TOPP INDUSTRIES, INC.

Reference
No: 16735

Revisions

(A)	First Released.

PUMP INFORMATION

Type: ☐ Sump Pump(s)
☐ Grinder Pump(s)
☐ Non-Clog Pump(s)

Model NO: _____

Rating: _____ GPM _____ TDH

Motor: _____ HP _____ RPM

Elec: _____ PH _____ HZ _____ v

Elec: _____ FL AMPS

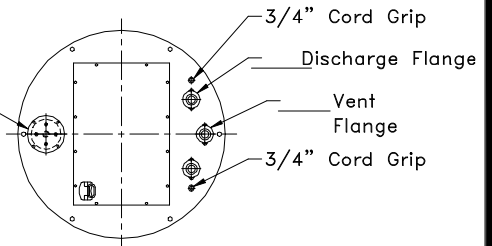
DISCHARGE PIPE

☐ 304 Stainless Steel
☐ Sch40 Galvanized Steel
☐ Sch80 PVC Pipe

☐ 1 1/4"
☐ 1 1/2"
☐ 2"
☐ 3"

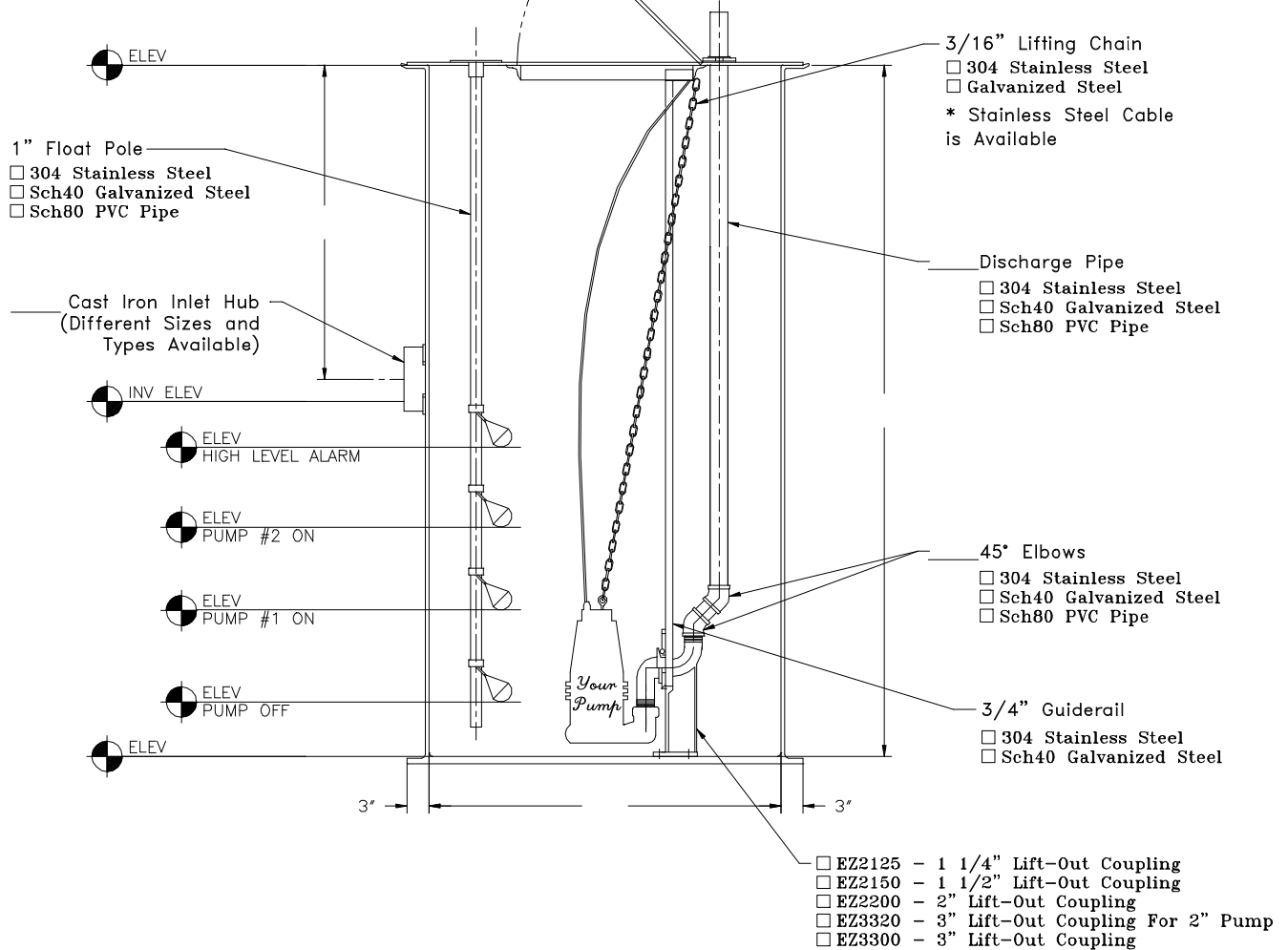
Anti-Floatation Flange
☐ Fiberglass Encapsulated
 ASTM A-36 Steel
☐ Round Fiberglass
☐ None

Inspection Plate
 with (4) 1/2" Cord Grips and
 1" Coupling



Gas Tight Hatch Cover

☐ Fiberglass ☐ Aluminum ☐ Steel



INDUSTRIES
TOPP
 INCORPORATED

EZ-Out Prefabricated
 Fiberglass Lift Station
 Duplex - Top Discharge

Scale: None

Drawn By: RM

App'd By: .

Date: 04/21/03

This print is and contains confidential proprietary information owned exclusively by TOPP INDUSTRIES, INC. It is furnished on a strictly confidential basis. This restriction includes, but is not limited to the condition that this print will not only be used as a record or to identify or inspect parts or for other information purposes and will not be used to manufacture or procure the manufacture of the items shown in this print by any other source than TOPP INDUSTRIES, INC.

Highway 25 North P.O. Box 420
 Rochester, IN 46975
 Phone: 800/354-4534 Fax: 574/223-6106

Supersedes Prints
 Prior To: 04/21/03

Reference
 No: 16739

Revisions

A	First Released.

PUMP INFORMATION

Type: ☐ Sump Pump(s)
☐ Grinder Pump(s)
☐ Non-Clog Pump(s)

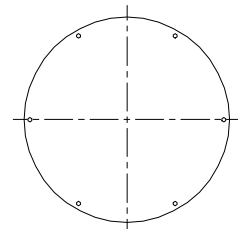
Model NO: _____
Rating: _____ GPM _____ TDH
Motor: _____ HP _____ RPM
Elec: _____ PH _____ HZ _____ v
Elec: _____ FL AMPS

DISCHARGE PIPE

☐ 304 Stainless Steel
☐ Sch40 Galvanized Steel
☐ Sch80 PVC Pipe

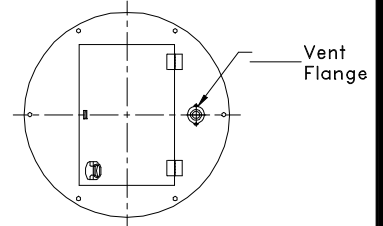
☐ 1 1/4"
☐ 1 1/2"
☐ 2"

Anti-Floatation Flange
☐ Fiberglass Encapsulated
ASTM A-36 Steel
☐ Round Fiberglass
☐ None



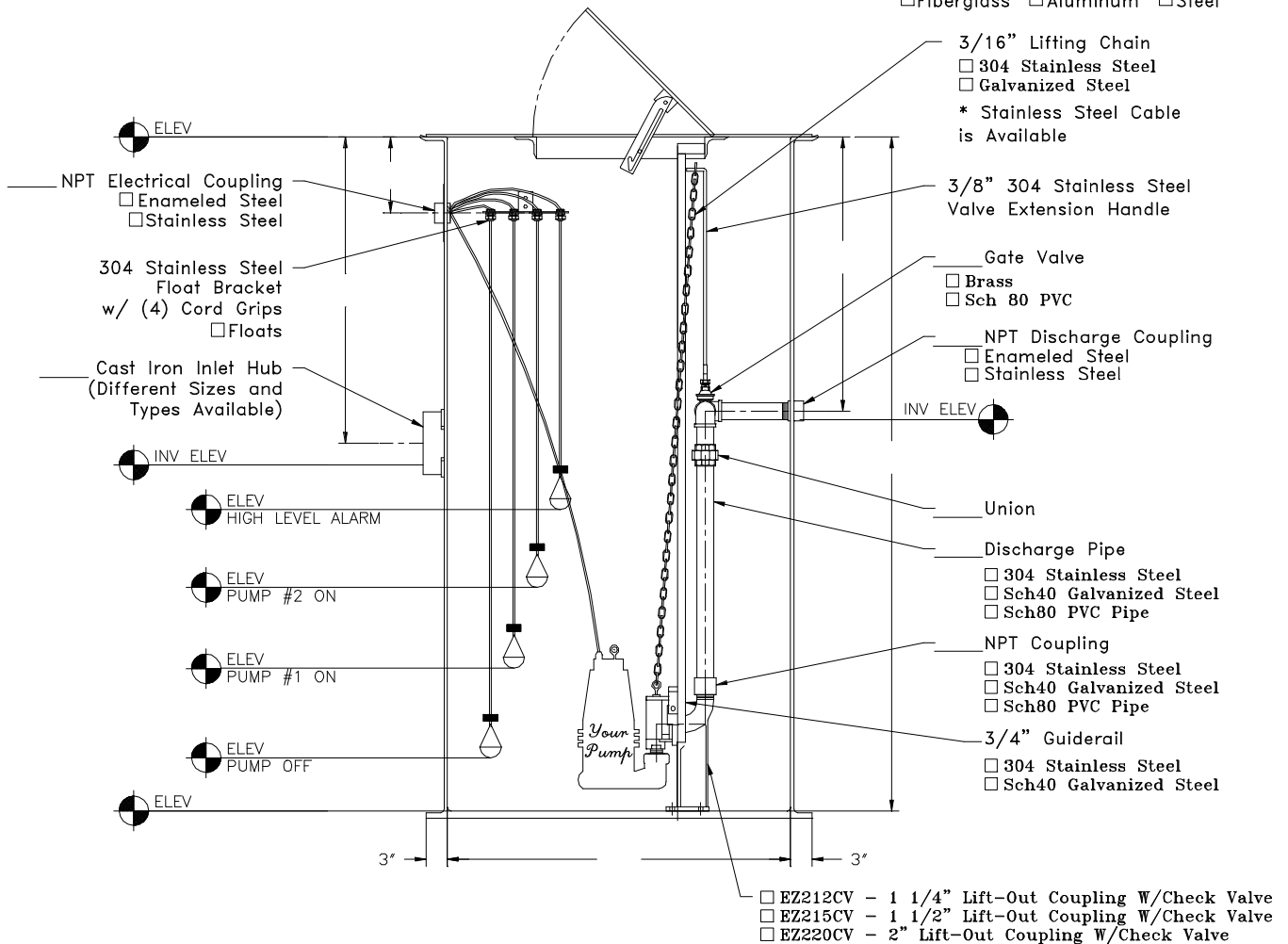
Solid Cover

☐ Fiberglass
☐ Steel



Hinged and Lockable Cover

☐ Fiberglass ☐ Aluminum ☐ Steel



INDUSTRIES
TOPP
INCORPORATED

EZ-Out With Check Valve
Prefabricated Fiberglass Lift
Station

Duplex - Side Discharge

Scale: None
Drawn By: KM
App'd By: .
Date: 04/21/03

Supersedes Prints
Prior To: 04/23/03

This print is and contains confidential proprietary information owned exclusively by TOPP INDUSTRIES, INC. It is furnished on a strictly confidential basis. This restriction includes, but is not limited to the condition that this print will not only be used as a record or to identify or inspect parts or for other information purposes and will not be used to manufacture or procure the manufacture of the items shown in this print by any other source than TOPP INDUSTRIES, INC.

Highway 25 North P.O. Box 420
Rochester, IN 46975
Phone: 800/354-4534 Fax: 574/223-8106

Reference
No: 16742

Revisions

A	First Released.

PUMP INFORMATION

Type: ☐ Sump Pump(s)
☐ Grinder Pump(s)
☐ Non-Clog Pump(s)

Model NO: _____
Rating: _____ GPM _____ TDH
Motor: _____ HP _____ RPM
Elec: _____ PH _____ HZ _____ v
Elec: _____ FL AMPS

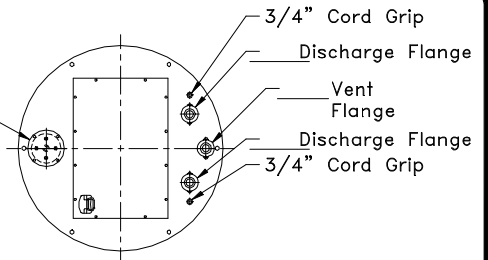
DISCHARGE PIPE

☐ 304 Stainless Steel
☐ Sch40 Galvanized Steel
☐ Sch80 PVC Pipe

☐ 1 1/4"
☐ 1 1/2"
☐ 2"

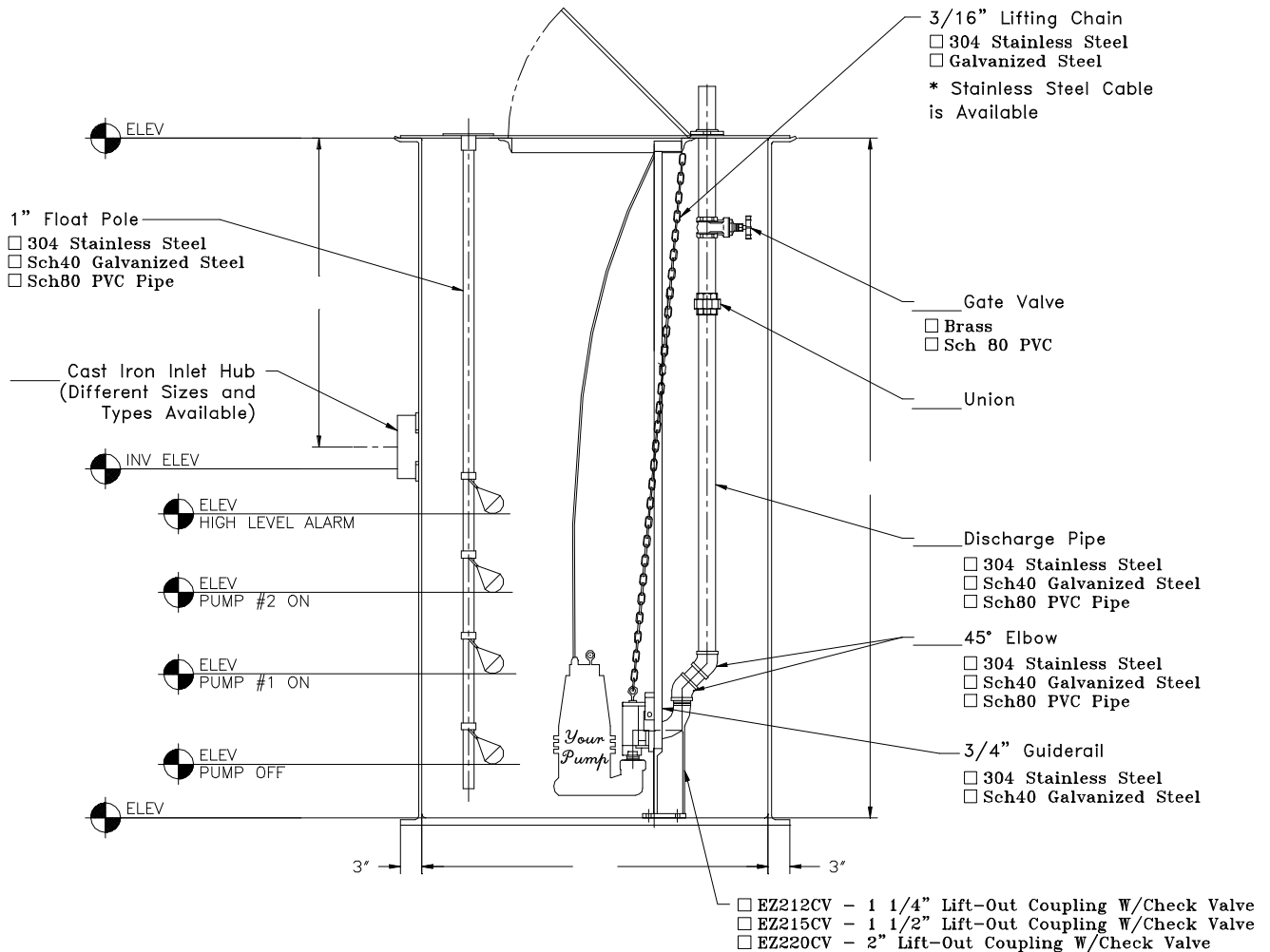
Anti-Floatation Flange
☐ Fiberglass Encapsulated
ASTM A-36 Steel
☐ Round Fiberglass
☐ None

Inspection Plate
with (4) 1/2" Cord Grips and
1" Coupling



Gas Tight Hatch Cover

☐ Fiberglass ☐ Aluminum ☐ Steel



INDUSTRIES
TOPP
INCORPORATED

EZ-Out With Check Valve
Prefabricated Fiberglass Lift
Station
Duplex - Top Discharge
With Valves

Scale: None
Drawn By: KM
App'd By: .
Date: 04/21/03

This print is and contains confidential proprietary information owned exclusively
by TOPP INDUSTRIES, INC. It is furnished on a strictly confidential basis. This
restriction includes, but is not limited to the condition that this print will not only
be used as a record or to identify or inspect parts or for other information purposes
and will not be used to manufacture or procure the manufacture of the items shown
in this print by any other source than TOPP INDUSTRIES, INC.

Highway 25 North P.O. Box 420
Rochester, IN 46975
Phone: 800/354-4534 Fax: 574/223-8106

Supersedes Prints
Prior To: 04/23/03

Reference
No: 16743

Revisions

A	First Released.

PUMP INFORMATION

Type: ☐ Sump Pump(s)
☐ Grinder Pump(s)
☐ Non-Clog Pump(s)

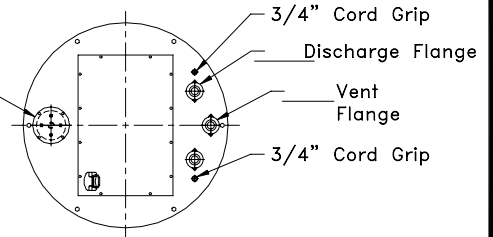
Model NO: _____
 Rating: _____ GPM _____ TDH
 Motor: _____ HP _____ RPM
 Elec: _____ PH _____ HZ _____ v
 Elec: _____ FL AMPS

DISCHARGE PIPE

☐ 304 Stainless Steel
☐ Sch40 Galvanized Steel
☐ Sch80 PVC Pipe
☐ 1 1/4"
☐ 1 1/2"
☐ 2"

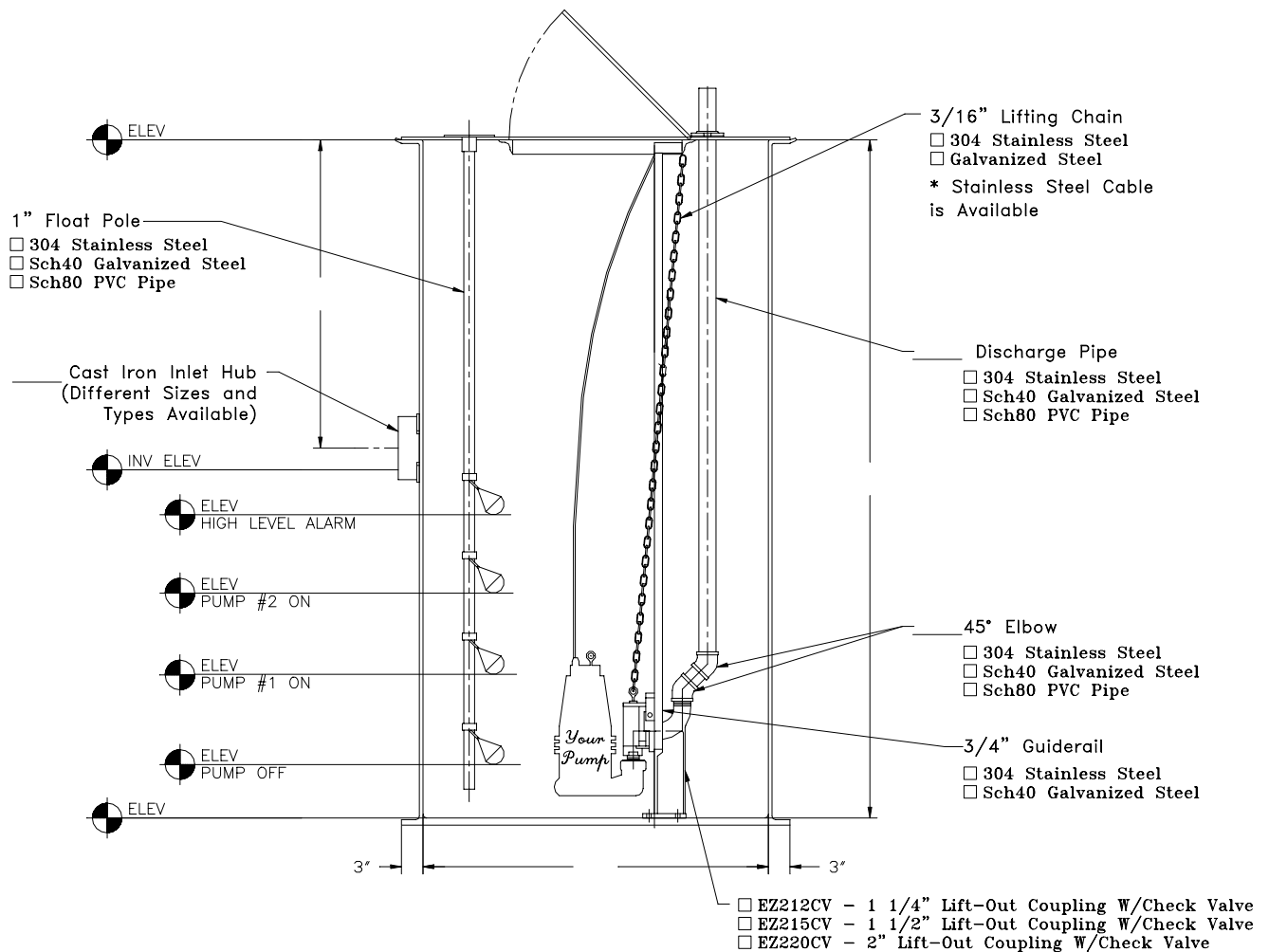
Anti-Floatation Flange
☐ Fiberglass Encapsulated
 ASTM A-36 Steel
☐ Round Fiberglass
☐ None

Inspection Plate
 with (4) 1/2" Cord Grips and
 1" Coupling



Gas Tight Hatch Cover

☐ Fiberglass ☐ Aluminum ☐ Steel



TOPP
 INDUSTRIES
 INCORPORATED

EZ-Out With Check Valve
 Prefabricated Fiberglass Lift
 Station

Duplex - Top Discharge

Highway 25 North P.O. Box 420
 Rochester, IN 46975
 Phone: 800/354-4534 Fax: 574/223-6106

Scale: None
 Drawn By:
 App'd By: _____
 Date: 04/21/03

Supersedes Prints
 Prior To: 04/23/03

This print is and contains confidential proprietary information owned exclusively by TOPP INDUSTRIES, INC. It is furnished on a strictly confidential basis. This restriction includes, but is not limited to the condition that this print will not only be used as a record or to identify or inspect parts or for other information purposes and will not be used to manufacture or procure the manufacture of the items shown in this print by any other source than TOPP INDUSTRIES, INC.

Reference
 No: 16747

Revisions

	First Released.

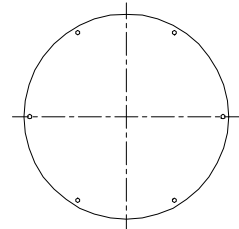
PUMP INFORMATION

Type: ☐ Sump Pump(s)
☐ Grinder Pump(s)
☐ Non-Clog Pump(s)

Model NO: _____
Rating: _____ GPM _____ TDH
Motor: _____ HP _____ RPM
Elec: _____ PH _____ HZ _____ v
Elec: _____ FL AMPS

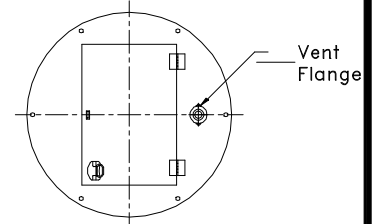
DISCHARGE PIPE

☐ 3" 304 Stainless Steel
☐ 3" Sch40 Galvanized Steel
☐ 3" Sch80 PVC Pipe



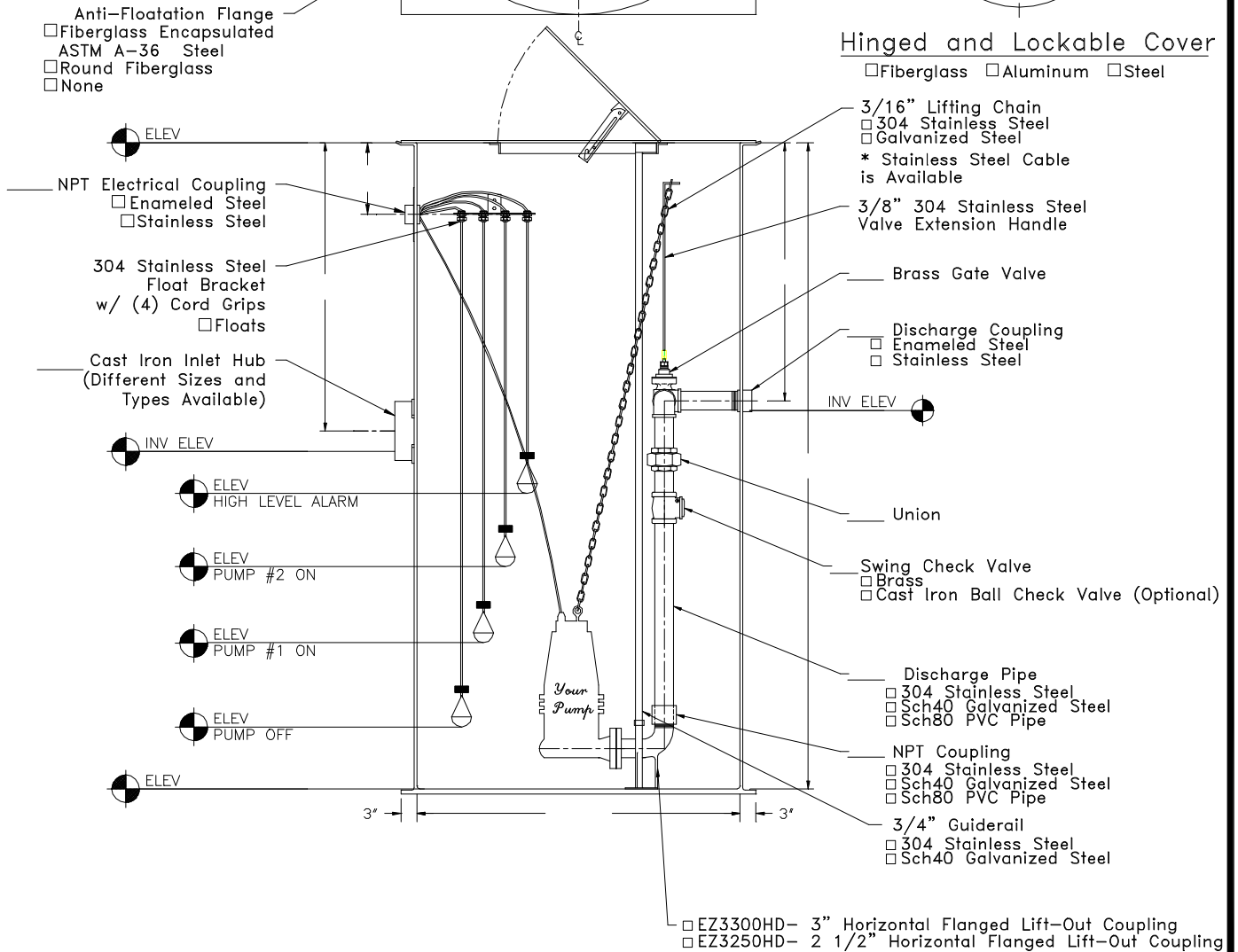
Solid Cover

☐ Fiberglass
☐ Steel



Hinged and Lockable Cover

☐ Fiberglass ☐ Aluminum ☐ Steel



TOPP
INDUSTRIES
INCORPORATED

EZ-Out Prefabricated
Fiberglass Lift Station
Duplex-EZ3300HD-EZ3250HD
Side Discharge

Highway 25 North P.O. Box 420
Rochester, IN 46975
Phone: 800/354-4534 Fax: 574/223-6106

Scale: None
Drawn By: KM
App'd By: .
Date: 04/21/03

Supersedes Prints
Prior To: 04/21/03

This print is and contains confidential proprietary information owned exclusively by TOPP INDUSTRIES, INC. It is furnished on a strictly confidential basis. This restriction includes, but is not limited to the condition that this print will not only be used as a record or to identify or inspect parts or for other information purposes and will not be used to manufacture or procure the manufacture of the items shown in this print by any other source than TOPP INDUSTRIES, INC.

Reference No: 16759

Revisions

A	First Released.

PUMP INFORMATION

Type: ☐ Sump Pump(s)
☐ Grinder Pump(s)
☐ Non-Clog Pump(s)

Model NO: _____

Rating: _____ GPM _____ TDH

Motor: _____ HP _____ RPM

Elec: _____ PH _____ HZ _____ v

Elec: _____ FL AMPS

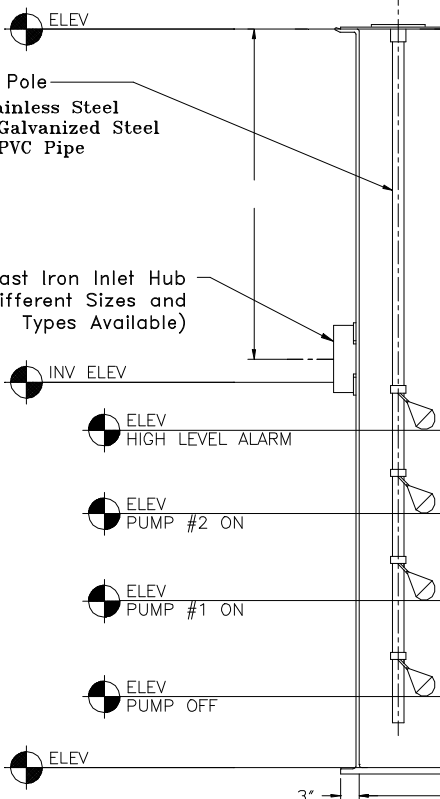
DISCHARGE PIPE

☐ 3" 304 Stainless Steel
☐ 3" Sch40 Galvanized Steel
☐ 3" Sch80 PVC Pipe

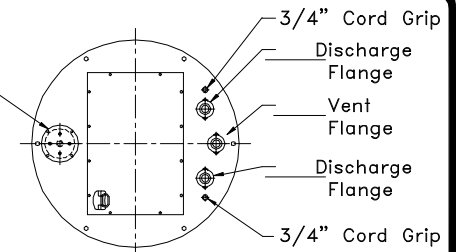
Anti-Floatation Flange
☐ Fiberglass Encapsulated
 ASTM A-36 Steel
☐ Round Fiberglass
☐ None

1" Float Pole
☐ 304 Stainless Steel
☐ Sch40 Galvanized Steel
☐ Sch80 PVC Pipe

Cast Iron Inlet Hub
 (Different Sizes and
 Types Available)



Inspection Plate
 with (4) 1/2" Cord Grips and
 1" Coupling



Gas Tight Hatch Cover

☐ Fiberglass ☐ Aluminum ☐ Steel

3/16" Lifting Chain
☐ 304 Stainless Steel
☐ Galvanized Steel
 * Stainless Steel Cable
 is Available

Brass Gate Valve

Union

Swing Check Valve
☐ Brass
☐ Cast Iron Ball Check Valve (Optional)

Discharge Pipe
☐ 304 Stainless Steel
☐ Sch40 Galvanized Steel
☐ Sch80 PVC Pipe

45° Elbows
☐ 304 Stainless Steel
☐ Sch40 Galvanized Steel
☐ Sch80 PVC Pipe

3/4" Guiderail
☐ 304 Stainless Steel
☐ Sch40 Galvanized Steel

☐ EZ3300HD- 3" Horizontal Flanged Lift-Out Coupling
☐ EZ3250HD- 2 1/2" Horizontal Flanged Lift-Out Coupling

INDUSTRIES
TOPP
 INCORPORATED

EZ-Out Prefabricated
 Fiberglass Lift Station
 Duplex-EZ3300HD-EZ3250HD
 Top Discharge

Highway 25 North P.O. Box 420
 Rochester, IN 46975
 Phone: 800/354-4534 Fax: 574/223-6106

Scale: None

Drawn By: RM

App'd By: .

Date: 04/21/03

Supersedes Prints
 Prior To: 04/21/03

This print is and contains confidential proprietary information owned exclusively by TOPP INDUSTRIES, INC. It is furnished on a strictly confidential basis. This restriction includes, but is not limited to the condition that this print will not only be used as a record or to identify or inspect parts or for other information purposes and will not be used to manufacture or procure the manufacture of the items shown in this print by any other source than TOPP INDUSTRIES, INC.

Reference
 No: 16760

Revisions

A	First Released.

PUMP INFORMATION

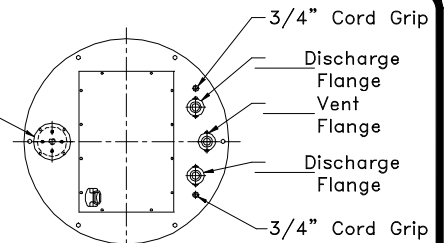
Type: ☐ Sump Pump(s)
☐ Grinder Pump(s)
☐ Non-Clog Pump(s)

Model NO: _____
Rating: _____ GPM _____ TDH
Motor: _____ HP _____ RPM
Elec: _____ PH _____ HZ _____ v
Elec: _____ FL AMPS

DISCHARGE PIPE

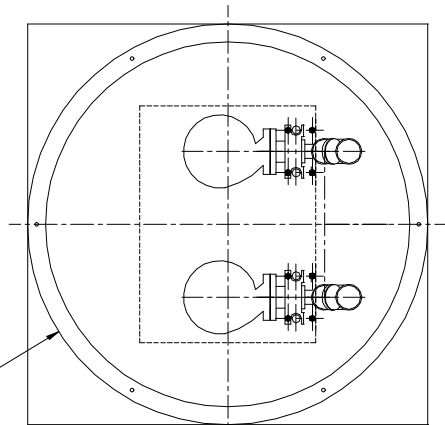
☐ 3" 304 Stainless Steel
☐ 3" Sch40 Galvanized Steel
☐ 3" Sch80 PVC Pipe

Inspection Plate
with (4) 1/2" Cord Grips and
1" Coupling



Gas Tight Hatch Cover

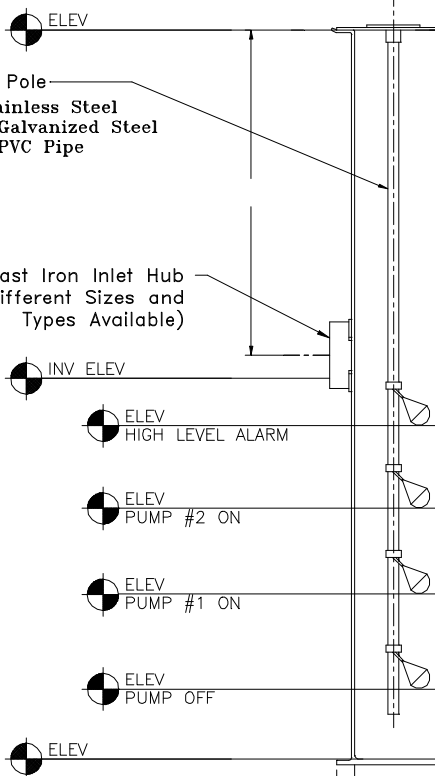
☐ Fiberglass ☐ Aluminum ☐ Steel



Anti-Floatation Flange
☐ Fiberglass Encapsulated
ASTM A-36 Steel
☐ Round Fiberglass
☐ None

1" Float Pole
☐ 304 Stainless Steel
☐ Sch40 Galvanized Steel
☐ Sch80 PVC Pipe

Cast Iron Inlet Hub
(Different Sizes and
Types Available)



3/16" Lifting Chain
☐ 304 Stainless Steel
☐ Galvanized Steel
* Stainless Steel Cable
is Available

Discharge Pipe
☐ 304 Stainless Steel
☐ Sch40 Galvanized Steel
☐ Sch80 PVC Pipe

45° Elbows
☐ 304 Stainless Steel
☐ Sch40 Galvanized Steel
☐ Sch80 PVC Pipe

3/4" Guiderail
☐ 304 Stainless Steel
☐ Sch40 Galvanized Steel

☐ EZ3300HD- 3" Horizontal Flanged Lift-Out Coupling
☐ EZ3250HD- 2 1/2" Horizontal Flanged Lift-Out Coupling

TOPP
INDUSTRIES
INCORPORATED

EZ-Out Prefabricated
Fiberglass Lift Station
Duplex-EZ3300HD-EZ3250HD
Top Discharge No Valves

Highway 25 North P.O. Box 420
Rochester, IN 46975
Phone: 800/354-4534 Fax: 574/223-6106

Scale: None
Drawn By: KM
App'd By: .
Date: 04/21/03

Supersedes Prints
Prior To: 04/21/03

This print is and contains confidential proprietary information owned exclusively
by TOPP INDUSTRIES, INC. It is furnished on a strictly confidential basis. This
restriction includes, but is not limited to the condition that this print will not only
be used as a record or to identify or inspect parts or for other information purposes
and will not be used to manufacture or procure the manufacture of the items shown
in this print by any other source than TOPP INDUSTRIES, INC.

Reference
No: 16764

Revisions

A	First Released.

PUMP INFORMATION

Type: ☐ Sump Pump(s)
☐ Grinder Pump(s)
☐ Non-Clog Pump(s)

Model NO: _____

Rating: _____ GPM _____ TDH

Motor: _____ HP _____ RPM

Elec: _____ PH _____ HZ _____ v

Elec: _____ FL AMPS

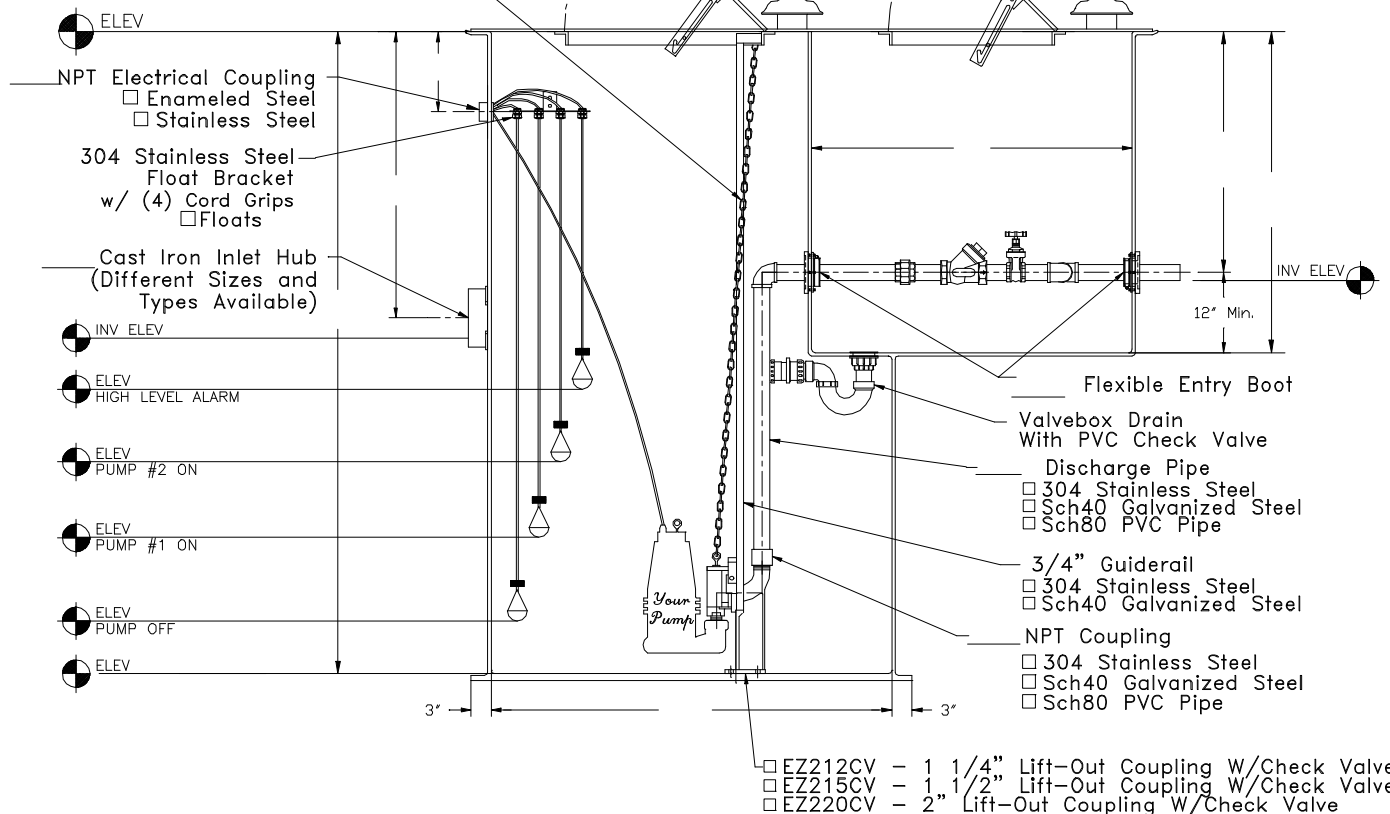
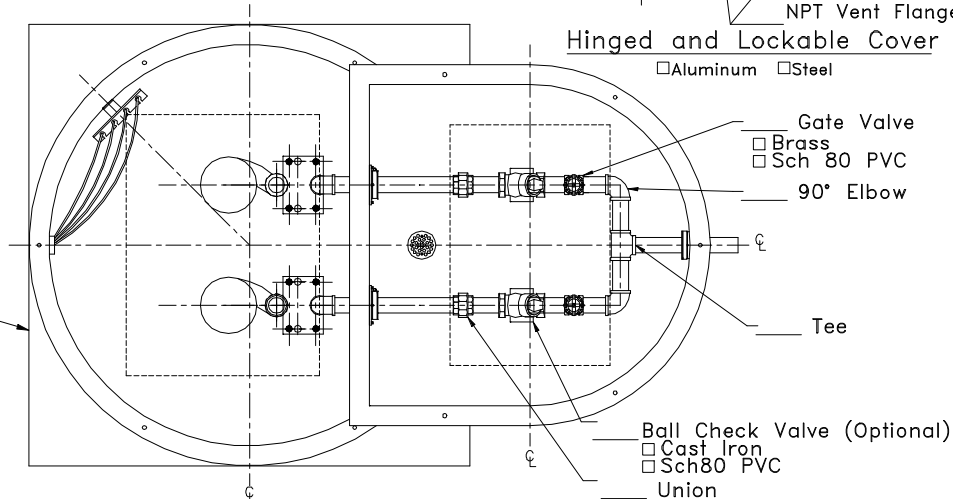
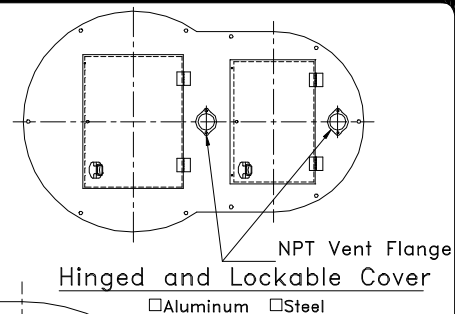
DISCHARGE PIPE

☐ 304 Stainless Steel
☐ Sch40 Galvanized Steel
☐ Sch80 PVC Pipe

☐ 1 1/4"
☐ 1 1/2"
☐ 2"

Anti-Floatation Flange
☐ Fiberglass Encapsulated
 ASTM A-36 Square Steel
☐ Round Fiberglass
☐ None

3/16" Lifting Chain
☐ 304 Stainless Steel
☐ Galvanized Steel
 * Stainless Steel Cable
 is Available



TOPP
 INDUSTRIES
 INCORPORATED

EZ-Out Prefabricated
 Fiberglass Lift Station

1 1/4" - 2" Duplex EZ-Out W/Check Valve
 With Flatwall Valvebox

Highway 25 North P.O. Box 420
 Rochester, IN 46975
 Phone: 800/354-4534 Fax: 574/223-6106

Scale: None

Drawn By: RM

App'd By: .

Date: 05/08/03

Supersedes Prints
 Prior To: 05/08/03

This print is and contains confidential proprietary information owned exclusively
 by TOPP INDUSTRIES, INC. It is furnished on a strictly confidential basis. This
 restriction includes, but is not limited to the condition that this print will not only
 be used as a record or to identify or inspect parts or for other information purposes
 and will not be used to manufacture or procure the manufacture of the items shown
 in this print by any other source than TOPP INDUSTRIES, INC.

Reference
 No: 16793

Revisions

A	First Released.