

# PUMP INFORMATION

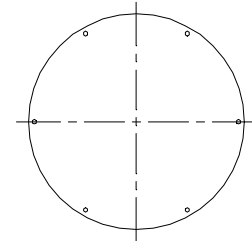
Type: ☐ Sump Pump(s)  
☐ Grinder Pump(s)  
☐ Non-Clog Pump(s)

Model NO: \_\_\_\_\_  
 Rating: \_\_\_\_\_ GPM \_\_\_\_\_ TDH  
 Motor: \_\_\_\_\_ HP \_\_\_\_\_ RPM  
 Elec: \_\_\_\_\_ PH \_\_\_\_\_ HZ \_\_\_\_\_ v  
 Elec: \_\_\_\_\_ FL AMPS

## DISCHARGE PIPE

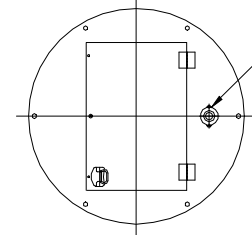
☐ 304 Stainless Steel  
☐ Sch40 Galvanized Steel  
☐ Sch80 PVC Pipe  
☐ 1 1/4"  
☐ 2"

Anti-Floatation Flange  
☐ Fiberglass Encapsulated  
 ASTM A-36 Steel  
☐ Round Fiberglass  
☐ None



## Solid Cover

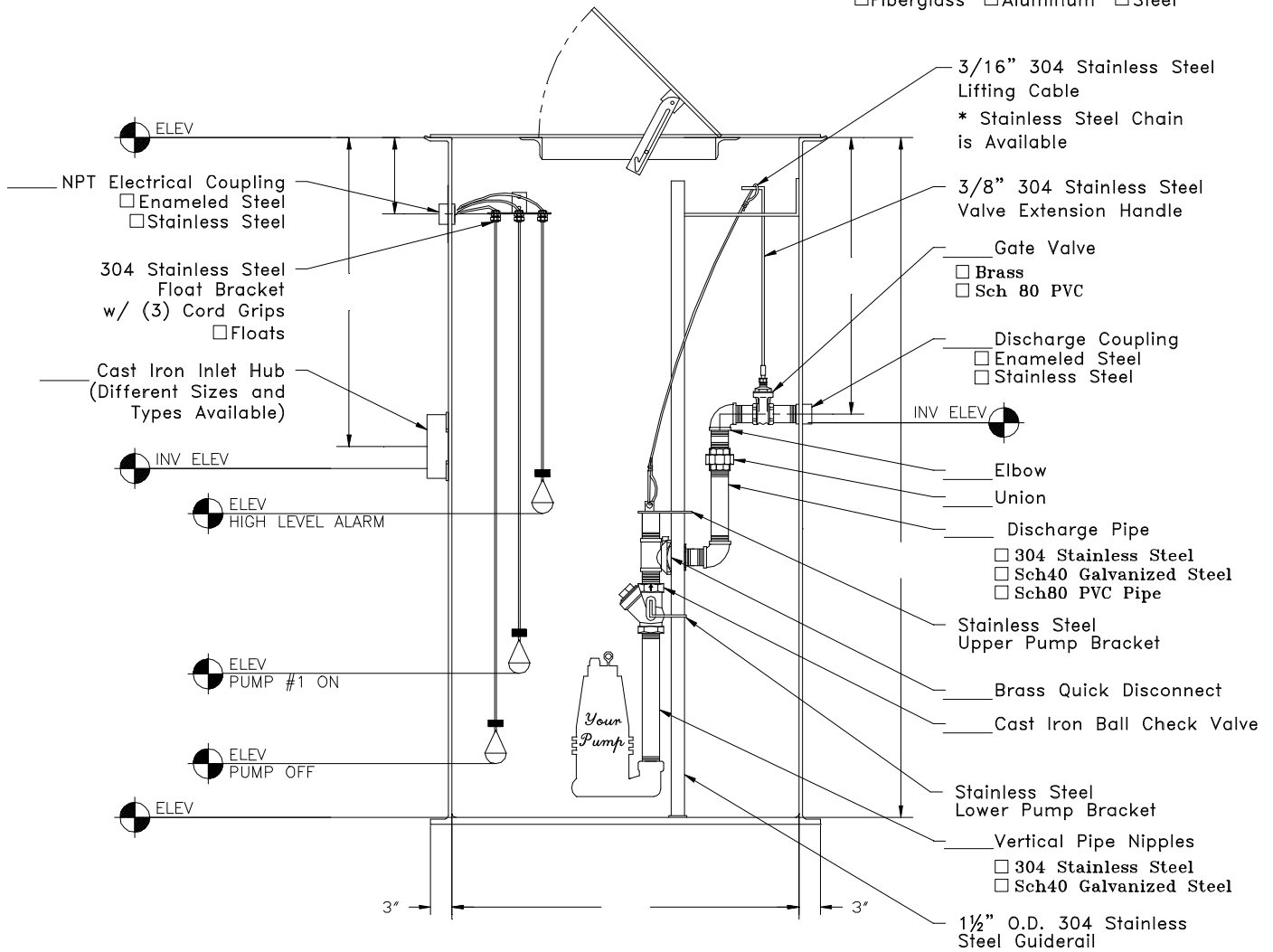
☐ Fiberglass  
☐ Steel



NPT Vent  
Flange

## Hinged and Lockable Cover

☐ Fiberglass ☐ Aluminum ☐ Steel



**INDUSTRIES**  
**TOPP**  
 INCORPORATED

### Prefabricated Fiberglass Lift Station

Reference: Simplex SGR  
 Elevated Discharge

Highway 25 North P.O. Box 420  
 Rochester, IN 46975  
 Phone: 800/354-4534 Fax: 574/223-6106

Scale: None

Drawn By: RM

App'd By: .

Date: 05/16/03

Supersedes Prints  
 Prior To: 05/16/03

This print is and contains confidential proprietary information owned exclusively by TOPP INDUSTRIES, INC. It is furnished on a strictly confidential basis. This restriction includes, but is not limited to the condition that this print will not only be used as a record or to identify or inspect parts or for other information purposes and will not be used to manufacture or procure the manufacture of the items shown in this print by any other source than TOPP INDUSTRIES, INC.

Reference No: 16837

### Revisions

A	First Released.

# PUMP INFORMATION

Type: ☐ Sump Pump(s)  
☐ Grinder Pump(s)  
☐ Non-Clog Pump(s)

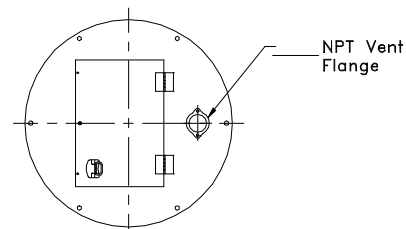
Model NO: \_\_\_\_\_  
 Rating: \_\_\_\_\_ GPM \_\_\_\_\_ TDH  
 Motor: \_\_\_\_\_ HP \_\_\_\_\_ RPM  
 Elec: \_\_\_\_\_ PH \_\_\_\_\_ HZ \_\_\_\_\_ v  
 Elec: \_\_\_\_\_ FL AMPS

## DISCHARGE PIPE

☐ 304 Stainless Steel  
☐ Sch40 Galvanized Steel  
☐ Sch80 PVC Pipe

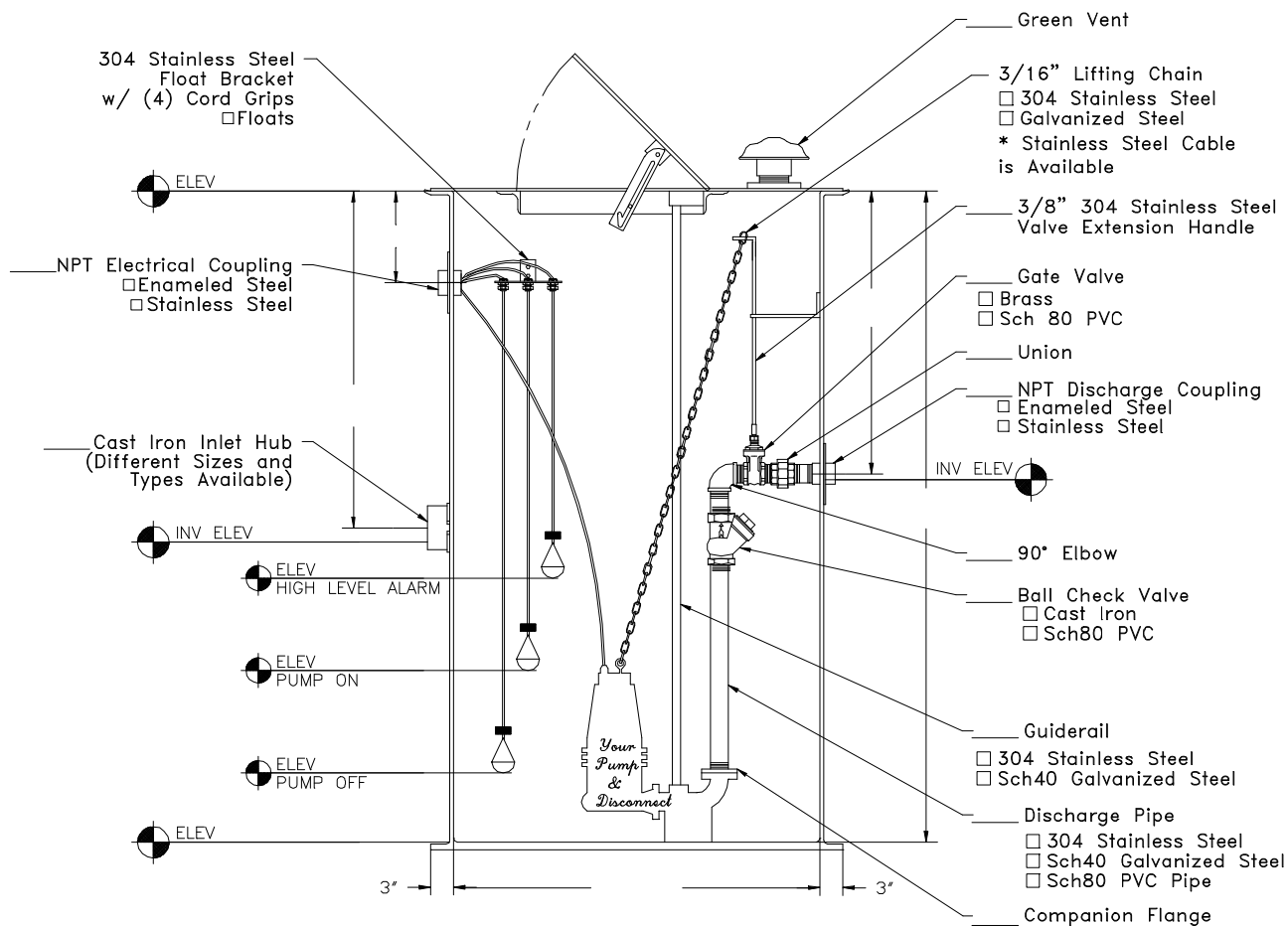
☐ 1 1/4"  
☐ 1 1/2"  
☐ 2"  
☐ 3"

Anti-Floatation Flange  
☐ Fiberglass Encapsulated  
 ASTM A-36 Steel  
☐ Round Fiberglass  
☐ None



## Hinged and Lockable Cover

☐ Fiberglass ☐ Aluminum ☐ Steel



**TOPP**  
 INDUSTRIES  
 INCORPORATED

Prefabricated Fiberglass  
 Simplex Lift Station  
 Reference: Simplex Base Elbow  
 Side Discharge

Highway 25 North P.O. Box 420  
 Rochester, IN 46975  
 Phone: 800/354-4534 Fax: 674/223-6106

Scale: None  
 Drawn By: RM  
 App'd By:  
 Date: 05/28/03

Supersedes Prints  
 Prior To: 05/28/03

This print is and contains confidential proprietary information owned exclusively by TOPP INDUSTRIES, INC. It is furnished on a strictly confidential basis. This restriction includes, but is not limited to the condition that this print will not only be used as a record or to identify or inspect parts or for other information purposes and will not be used to manufacture or procure the manufacture of the items shown in this print by any other source than TOPP INDUSTRIES, INC.

Reference  
 No: 10144

## Revisions

①	First Released.

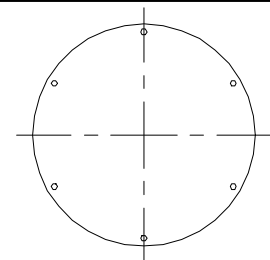
## PUMP INFORMATION

Type: ☐ Sump Pump(s)  
☐ Grinder Pump(s)  
☐ Non-Clog Pump(s)

Model NO: \_\_\_\_\_  
 Rating: \_\_\_\_\_ GPM \_\_\_\_\_ TDH  
 Motor: \_\_\_\_\_ HP \_\_\_\_\_ RPM  
 Elec: \_\_\_\_\_ PH \_\_\_\_\_ HZ \_\_\_\_\_ v  
 Elec: \_\_\_\_\_ FL AMPS

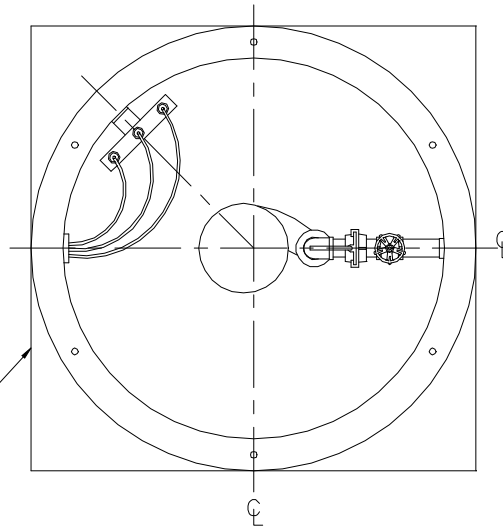
## DISCHARGE PIPE

☐ 304 Stainless Steel  
☐ Sch40 Galvanized Steel  
☐ Sch80 PVC Pipe  
☐ 1 1/4"  
☐ 2"



## Solid Cover

☐ Fiberglass ☐ Aluminum ☐ Steel



## Anti-Floatation Flange

☐ Fiberglass Encapsulated  
 ASTM A-36 Square Steel  
☐ Round Fiberglass  
☐ None

304 Stainless Steel  
 Float Bracket  
 w/ (3) Cord Grips  
☐ Floats

3/16" 304 Stainless Steel  
 Lifting Cable  
 \* Stainless Steel Chain  
 is Available

3/8" 304 Stainless Steel  
 Valve Extension Handle

NPT Electrical Coupling  
☐ Enameled Steel  
☐ Stainless Steel

Gate Valve  
☐ Sch80 PVC  
☐ Brass

NPT Discharge Coupling  
☐ Enameled Steel  
☐ Stainless Steel

Inlet Grommet  
 (Different Sizes and  
 Types Available)

NPT Brass  
 Quick Disconnect

ELEV  
 HIGH LEVEL ALARM

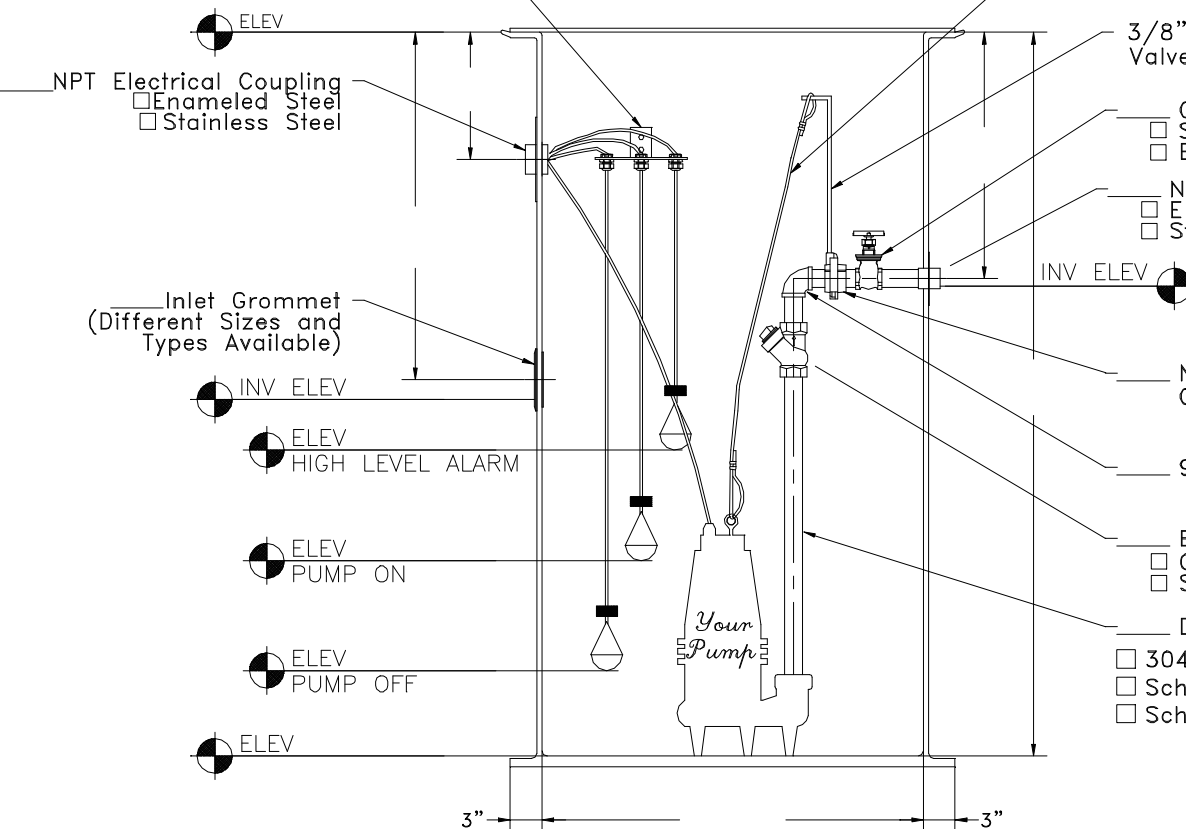
ELEV  
 PUMP ON

ELEV  
 PUMP OFF

90° Elbow

Ball Check Valve  
☐ Cast Iron  
☐ Sch80 PVC

Discharge Pipe  
☐ 304 Stainless Steel  
☐ Sch40 Galvanized Steel  
☐ Sch80 PVC Pipe



**INDUSTRIES**  
**TOPP**  
 INCORPORATED

Non-Guiderrail Prefabricated Fiberglass  
 Simplex Lift Station

Reference: Non-Guiderrail Simplex

Highway 25 North P.O. Box 420  
 Rochester, IN 46975  
 Phone: 800/354-4534 Fax: 574/223-6106

Scale: None

Drawn By: RM

App'd By: .

Date: 05/16/03

Supersedes Prints  
 Prior To: 05/16/03

This print is and contains confidential proprietary information owned exclusively by TOPP INDUSTRIES, INC. It is furnished on a strictly confidential basis. This restriction includes, but is not limited to the condition that this print will not only be used as a record or to identify or inspect parts or for other information purposes and will not be used to manufacture or procure the manufacture of the items shown in this print by any other source than TOPP INDUSTRIES, INC.

Reference No: 10148

## Revisions

A	First Released.

# PUMP INFORMATION

Type: ☐ Sump Pump(s)  
☐ Grinder Pump(s)  
☐ Non-Clog Pump(s)

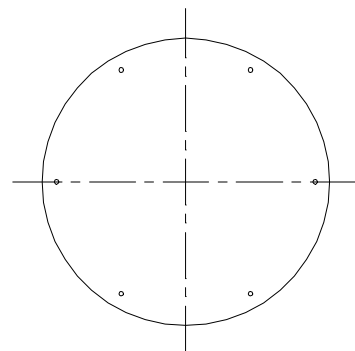
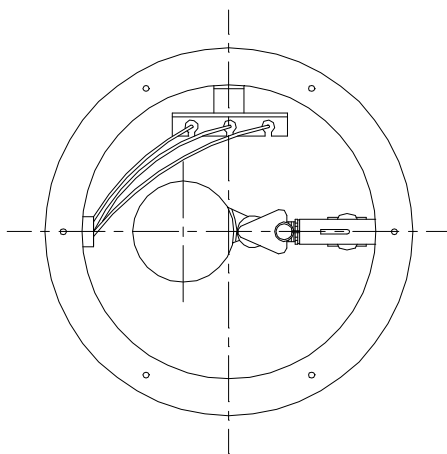
Model NO: \_\_\_\_\_

Rating: \_\_\_\_\_ GPM \_\_\_\_\_ TDH

Motor: \_\_\_\_\_ HP \_\_\_\_\_ RPM

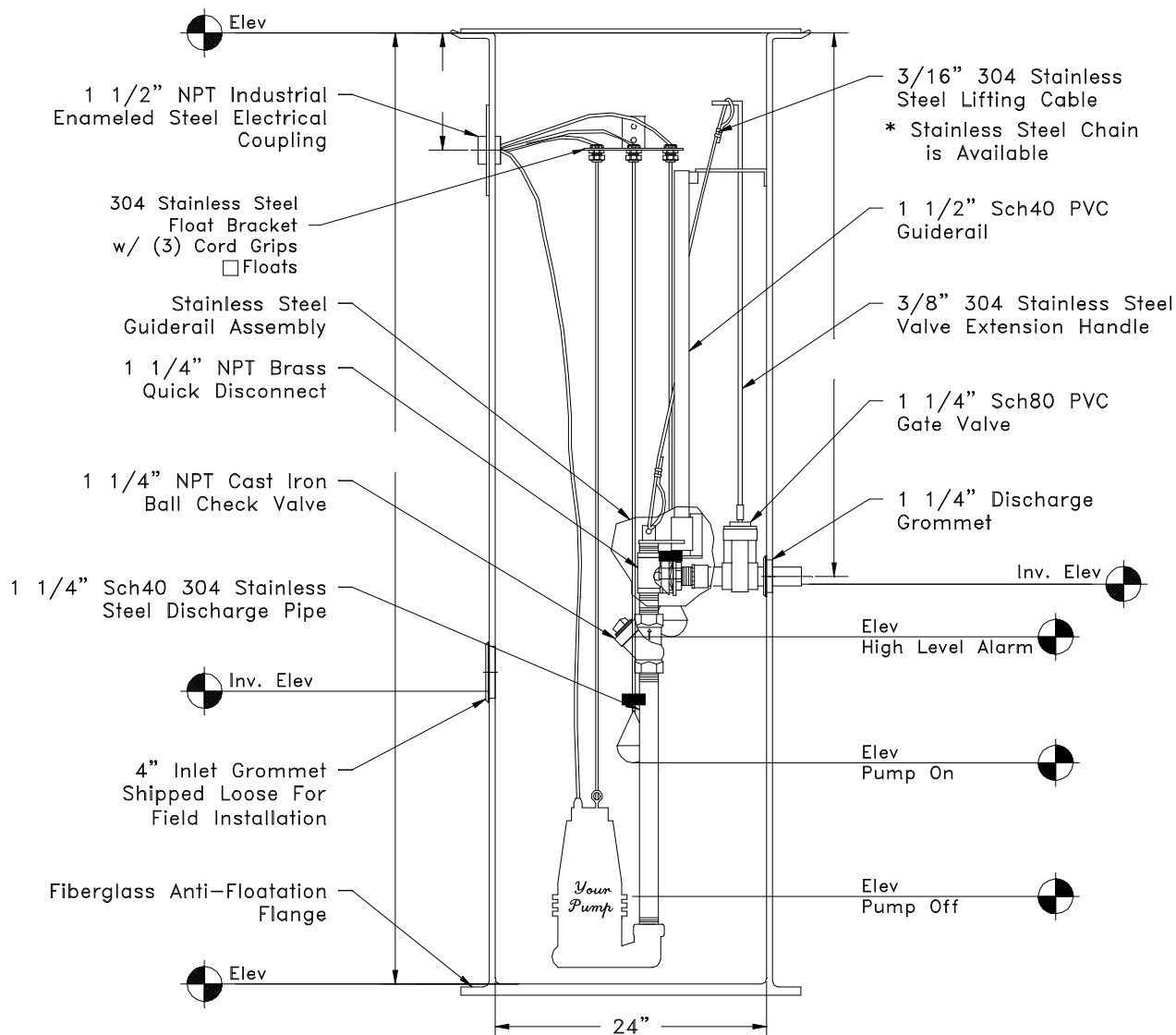
Elec: \_\_\_\_\_ PH \_\_\_\_\_ HZ \_\_\_\_\_ v

Elec: \_\_\_\_\_ FL AMPS



Solid Cover

☐ Fiberglass  
☐ Steel



**INDUSTRIES**  
**TOPP**  
 INCORPORATED

Prefabricated Fiberglass  
 Unirail Lift Station

Reference: Unirail

Highway 25 North P.O. Box 420  
 Rochester, IN 46975  
 Phone: 800/354-4534 Fax: 574/223-6106

Scale: None

Drawn By: RM

App'd By:

Date: 05/16/03

Supersedes Prints  
 Prior To: 05/16/03

This print is and contains confidential proprietary information owned exclusively by TOPP INDUSTRIES, INC. It is furnished on a strictly confidential basis. This restriction includes, but is not limited to the condition that this print will not only be used as a record or to identify or inspect parts or for other information purposes and will not be used to manufacture or procure the manufacture of the items shown in this print by any other source than TOPP INDUSTRIES, INC.

Reference No: 11119

Revisions

A	First Released.

# PUMP INFORMATION

Type: ☐ Sump Pump(s)  
☐ Grinder Pump(s)  
☐ Non-Clog Pump(s)

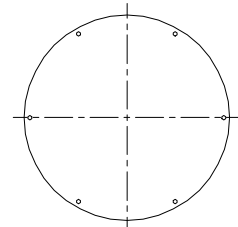
Model NO: \_\_\_\_\_  
 Rating: \_\_\_\_\_ GPM \_\_\_\_\_ TDH  
 Motor: \_\_\_\_\_ HP \_\_\_\_\_ RPM  
 Elec: \_\_\_\_\_ PH \_\_\_\_\_ HZ \_\_\_\_\_ v  
 Elec: \_\_\_\_\_ FL AMPS

## DISCHARGE PIPE

☐ 304 Stainless Steel  
☐ Sch40 Galvanized Steel  
☐ Sch80 PVC Pipe

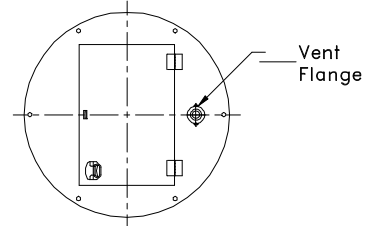
☐ 1 1/4"  
☐ 1 1/2"  
☐ 2"  
☐ 3"

Anti-Floatation Flange  
☐ Fiberglass Encapsulated  
 ASTM A-36 Steel  
☐ Round Fiberglass  
☐ None



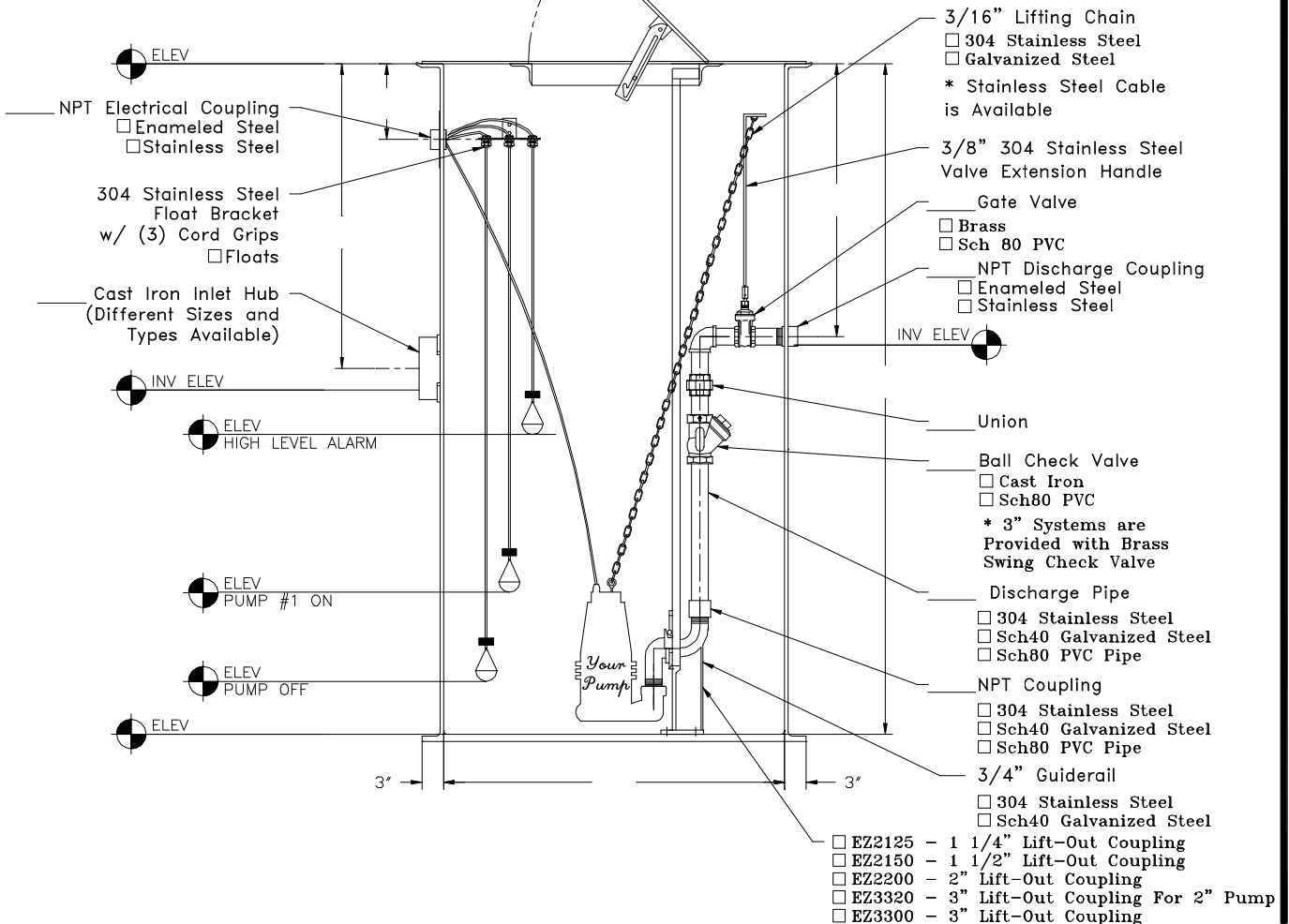
Solid Cover

☐ Fiberglass  
☐ Steel



Hinged and Lockable Cover

☐ Fiberglass ☐ Aluminum ☐ Steel



**TOPP**  
 INDUSTRIES  
 INCORPORATED

EZ-Out Prefabricated  
 Fiberglass Lift Station  
 Simplex- Side Discharge

Highway 25 North P.O. Box 420  
 Rochester, IN 46975  
 Phone: 800/354-4534 Fax: 574/223-8106

Scale: None  
 Drawn By: KM  
 App'd By: \_\_\_\_\_  
 Date: 04/21/03

Supersedes Prints  
 Prior To: 04/21/03

This print is and contains confidential proprietary information owned exclusively by TOPP INDUSTRIES, INC. It is furnished on a strictly confidential basis. This restriction includes, but is not limited to the condition that this print will not only be used as a record or to identify or inspect parts or for other information purposes and will not be used to manufacture or procure the manufacture of the items shown in this print by any other source than TOPP INDUSTRIES, INC.

Reference No: 16736

## Revisions

A	First Released.

# PUMP INFORMATION

Type: ☐ Sump Pump(s)  
☐ Grinder Pump(s)  
☐ Non-Clog Pump(s)

Model NO: \_\_\_\_\_  
 Rating: \_\_\_\_\_ GPM \_\_\_\_\_ TDH  
 Motor: \_\_\_\_\_ HP \_\_\_\_\_ RPM  
 Elec: \_\_\_\_\_ PH \_\_\_\_\_ HZ \_\_\_\_\_ v  
 Elec: \_\_\_\_\_ FL AMPS

## DISCHARGE PIPE

☐ 304 Stainless Steel  
☐ Sch40 Galvanized Steel  
☐ Sch80 PVC Pipe

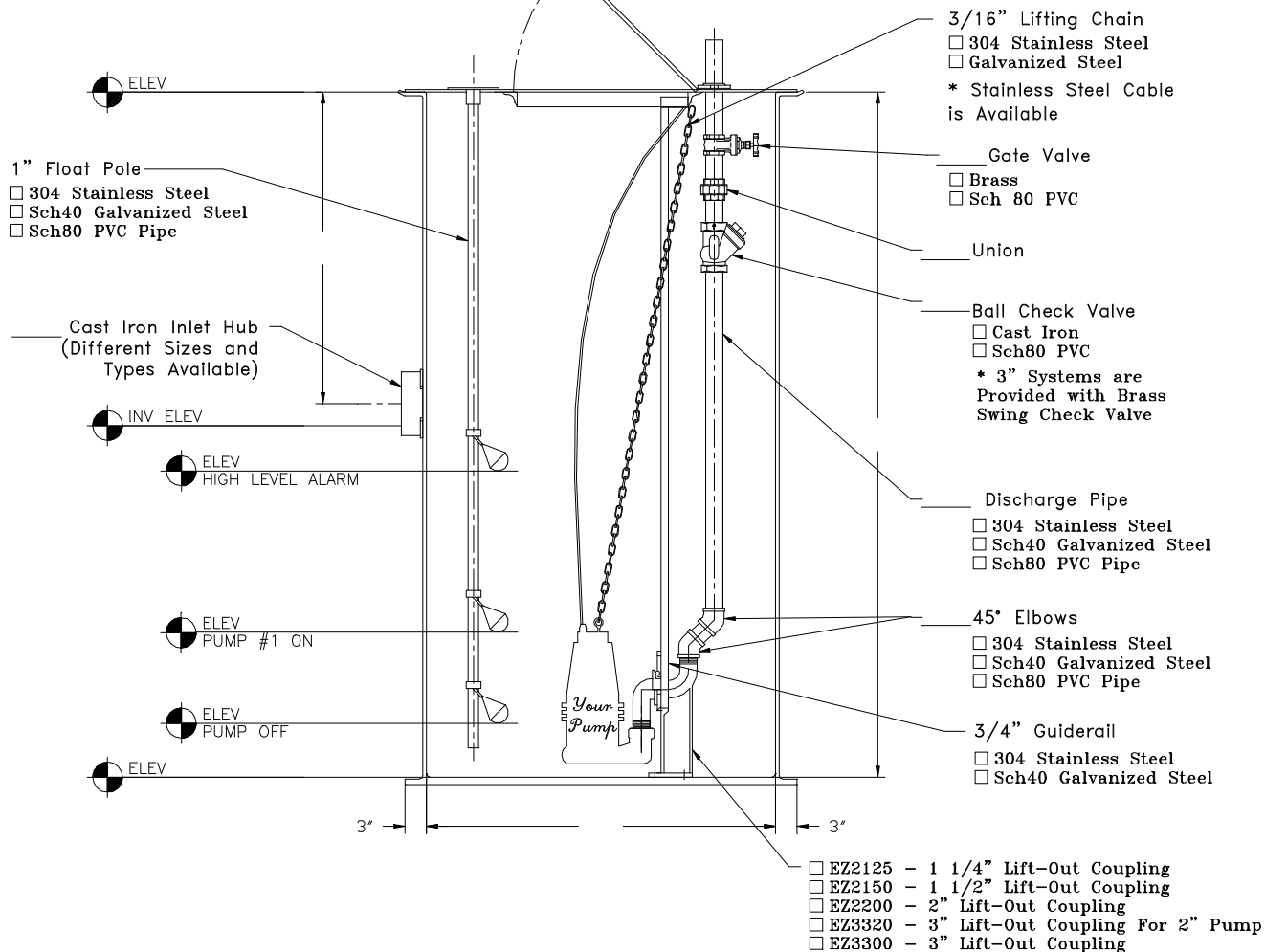
☐ 1 1/4"  
☐ 1 1/2"  
☐ 2"  
☐ 3"

Anti-Floatation Flange  
☐ Fiberglass Encapsulated  
 ASTM A-36 Steel  
☐ Round Fiberglass  
☐ None

Inspection Plate  
 with (3) 1/2" Cord Grips and  
 1" Coupling

## Gas Tight Hatch Cover

☐ Fiberglass ☐ Aluminum ☐ Steel



**INDUSTRIES**  
**TOPP**  
 INCORPORATED

EZ-Out Prefabricated  
 Fiberglass Lift Station  
 Simplex - Top Discharge  
 With Valves

Highway 25 North P.O. Box 420  
 Rochester, IN 46975  
 Phone: 800/354-4534 Fax: 574/223-8106

Scale: None  
 Drawn By: RM  
 App'd By: \_\_\_\_\_  
 Date: 04/21/03

Supersedes Prints  
 Prior To: 04/21/03

This print is and contains confidential proprietary information owned exclusively  
 by TOPP INDUSTRIES, INC. It is furnished on a strictly confidential basis. This  
 restriction includes, but is not limited to the condition that this print will not only  
 be used as a record or to identify or inspect parts or for other information purposes  
 and will not be used to manufacture or procure the manufacture of the items shown  
 in this print, by any other source than TOPP INDUSTRIES, INC.

Reference  
 No: 16737

## Revisions

(A)	First Released.

## PUMP INFORMATION

Type: ☐ Sump Pump(s)  
☐ Grinder Pump(s)  
☐ Non-Clog Pump(s)

Model NO: \_\_\_\_\_  
Rating: \_\_\_\_\_ GPM \_\_\_\_\_ TDH  
Motor: \_\_\_\_\_ HP \_\_\_\_\_ RPM  
Elec: \_\_\_\_\_ PH \_\_\_\_\_ HZ \_\_\_\_\_ v  
Elec: \_\_\_\_\_ FL AMPS

## DISCHARGE PIPE

☐ 304 Stainless Steel  
☐ Sch40 Galvanized Steel  
☐ Sch80 PVC Pipe

☐ 1 1/4"  
☐ 1 1/2"  
☐ 2"  
☐ 3"

Anti-Floatation Flange  
☐ Fiberglass Encapsulated  
ASTM A-36 Steel  
☐ Round Fiberglass  
☐ None

1" Float Pole  
☐ 304 Stainless Steel  
☐ Sch40 Galvanized Steel  
☐ Sch80 PVC Pipe

Cast Iron Inlet Hub  
(Different Sizes and  
Types Available)

ELEV

INV ELEV

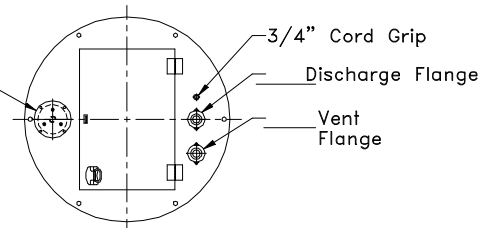
ELEV  
HIGH LEVEL ALARM

ELEV  
PUMP #1 ON

ELEV  
PUMP OFF

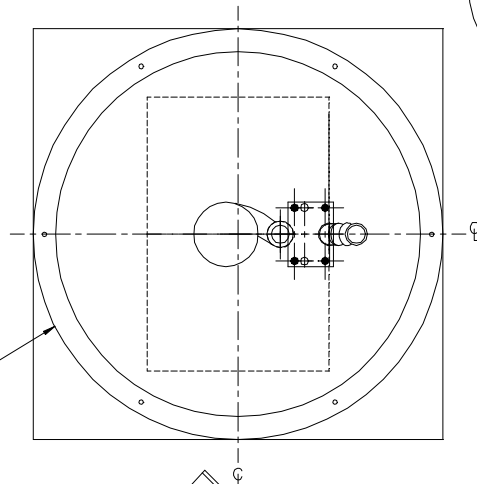
ELEV

Inspection Plate  
with (3) 1/2" Cord Grips and  
1" Coupling



## Gas Tight Hatch Cover

☐ Fiberglass ☐ Aluminum ☐ Steel



3/16" Lifting Chain

☐ 304 Stainless Steel  
☐ Galvanized Steel

\* Stainless Steel Cable  
is Available

Discharge Pipe

☐ 304 Stainless Steel  
☐ Sch40 Galvanized Steel  
☐ Sch80 PVC Pipe

45° Elbows

☐ 304 Stainless Steel  
☐ Sch40 Galvanized Steel  
☐ Sch80 PVC Pipe

3/4" Guiderail

☐ 304 Stainless Steel  
☐ Sch40 Galvanized Steel

☐ EZ2125 - 1 1/4" Lift-Out Coupling  
☐ EZ2150 - 1 1/2" Lift-Out Coupling  
☐ EZ2200 - 2" Lift-Out Coupling  
☐ EZ3320 - 3" Lift-Out Coupling For 2" Pump  
☐ EZ3300 - 3" Lift-Out Coupling

INDUSTRIES  
**TOPP**  
INCORPORATED

EZ-Out Prefabricated  
Fiberglass Lift Station

Simplex - Top Discharge

Highway 25 North P.O. Box 420  
Rochester, IN 46975  
Phone: 800/354-4534 Fax: 574/223-8106

Scale: None  
Drawn By: RM  
App'd By: \_\_\_\_\_  
Date: 04/21/03

Supersedes Prints  
Prior To: 04/21/03

This print is and contains confidential proprietary information owned exclusively by TOPP INDUSTRIES, INC. It is furnished on a strictly confidential basis. This restriction includes, but is not limited to the condition that this print will not only be used as a record or to identify or inspect parts or for other information purposes and will not be used to manufacture or procure the manufacture of the items shown in this print by any other source than TOPP INDUSTRIES, INC.

Reference  
No: 16738

## Revisions

Rev	Description
(A)	First Released.

# PUMP INFORMATION

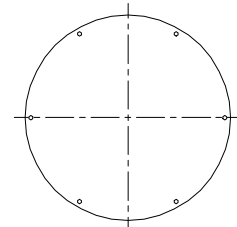
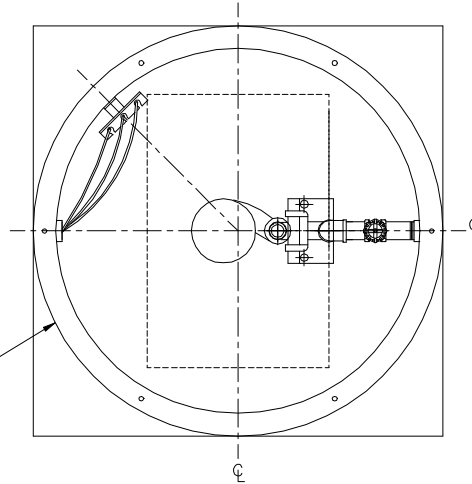
Type: ☐ Sump Pump(s)  
☐ Grinder Pump(s)  
☐ Non-Clog Pump(s)

Model NO: \_\_\_\_\_  
 Rating: \_\_\_\_\_ GPM \_\_\_\_\_ TDH  
 Motor: \_\_\_\_\_ HP \_\_\_\_\_ RPM  
 Elec: \_\_\_\_\_ PH \_\_\_\_\_ HZ \_\_\_\_\_ v  
 Elec: \_\_\_\_\_ FL AMPS

## DISCHARGE PIPE

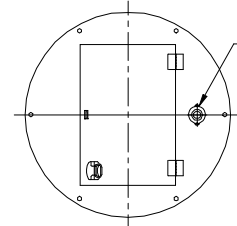
☐ 304 Stainless Steel  
☐ Sch40 Galvanized Steel  
☐ Sch80 PVC Pipe  
☐ 1 1/4"  
☐ 1 1/2"  
☐ 2"

Anti-Floatation Flange  
☐ Fiberglass Encapsulated  
 ASTM A-36 Steel  
☐ Round Fiberglass  
☐ None



## Solid Cover

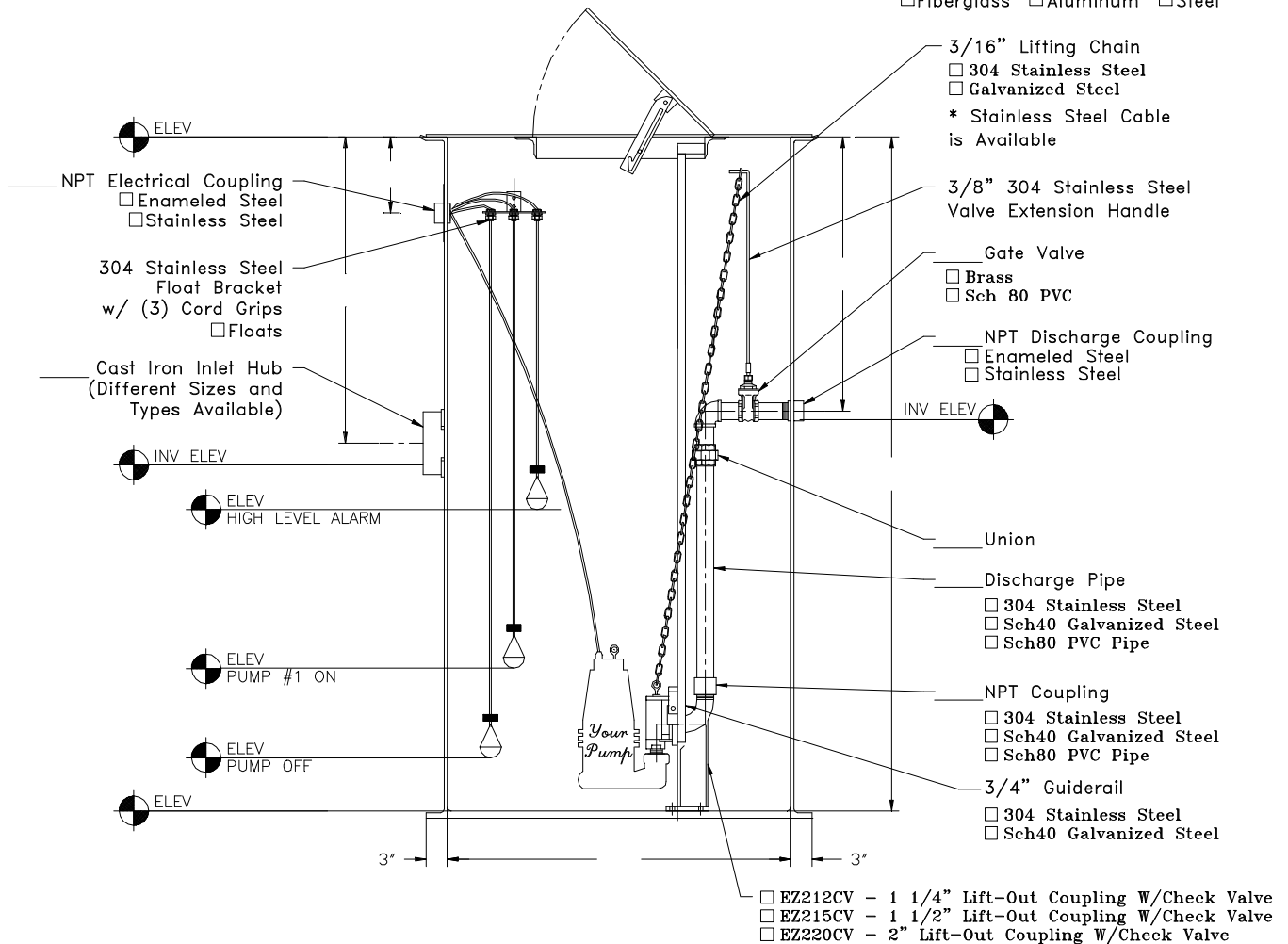
☐ Fiberglass  
☐ Steel



Vent  
Flange

## Hinged and Lockable Cover

☐ Fiberglass ☐ Aluminum ☐ Steel



**TOPP**  
 INDUSTRIES  
 INCORPORATED

EZ-Out With Check Valve  
 Prefabricated Fiberglass Lift  
 Station  
 Simplex - Side Discharge

Scale: None  
 Drawn By: KM  
 App'd By: \_\_\_\_\_  
 Date: 04/21/03

This print is and contains confidential proprietary information owned exclusively by TOPP INDUSTRIES, INC. It is furnished on a strictly confidential basis. This restriction includes, but is not limited to the condition that this print will not only be used as a record or to identify or inspect parts or for other information purposes and will not be used to manufacture or procure the manufacture of the items shown in this print by any other source than TOPP INDUSTRIES, INC.

Highway 25 North P.O. Box 420  
 Rochester, IN 46975  
 Phone: 800/354-4534 Fax: 574/223-8106

Supersedes Prints  
 Prior To: 04/23/03

Reference  
 No: 16744

## Revisions

A	First Released.



# PUMP INFORMATION

Type: ☐ Sump Pump(s)  
☐ Grinder Pump(s)  
☐ Non-Clog Pump(s)

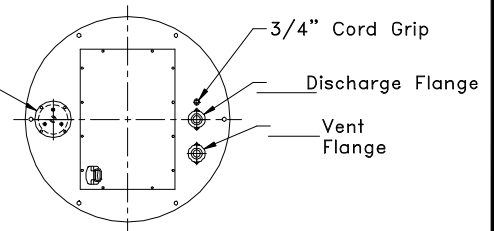
Model NO: \_\_\_\_\_  
 Rating: \_\_\_\_\_ GPM \_\_\_\_\_ TDH  
 Motor: \_\_\_\_\_ HP \_\_\_\_\_ RPM  
 Elec: \_\_\_\_\_ PH \_\_\_\_\_ HZ \_\_\_\_\_ v  
 Elec: \_\_\_\_\_ FL AMPS

## DISCHARGE PIPE

☐ 304 Stainless Steel  
☐ Sch40 Galvanized Steel  
☐ Sch80 PVC Pipe  
☐ 1 1/4"  
☐ 1 1/2"  
☐ 2"

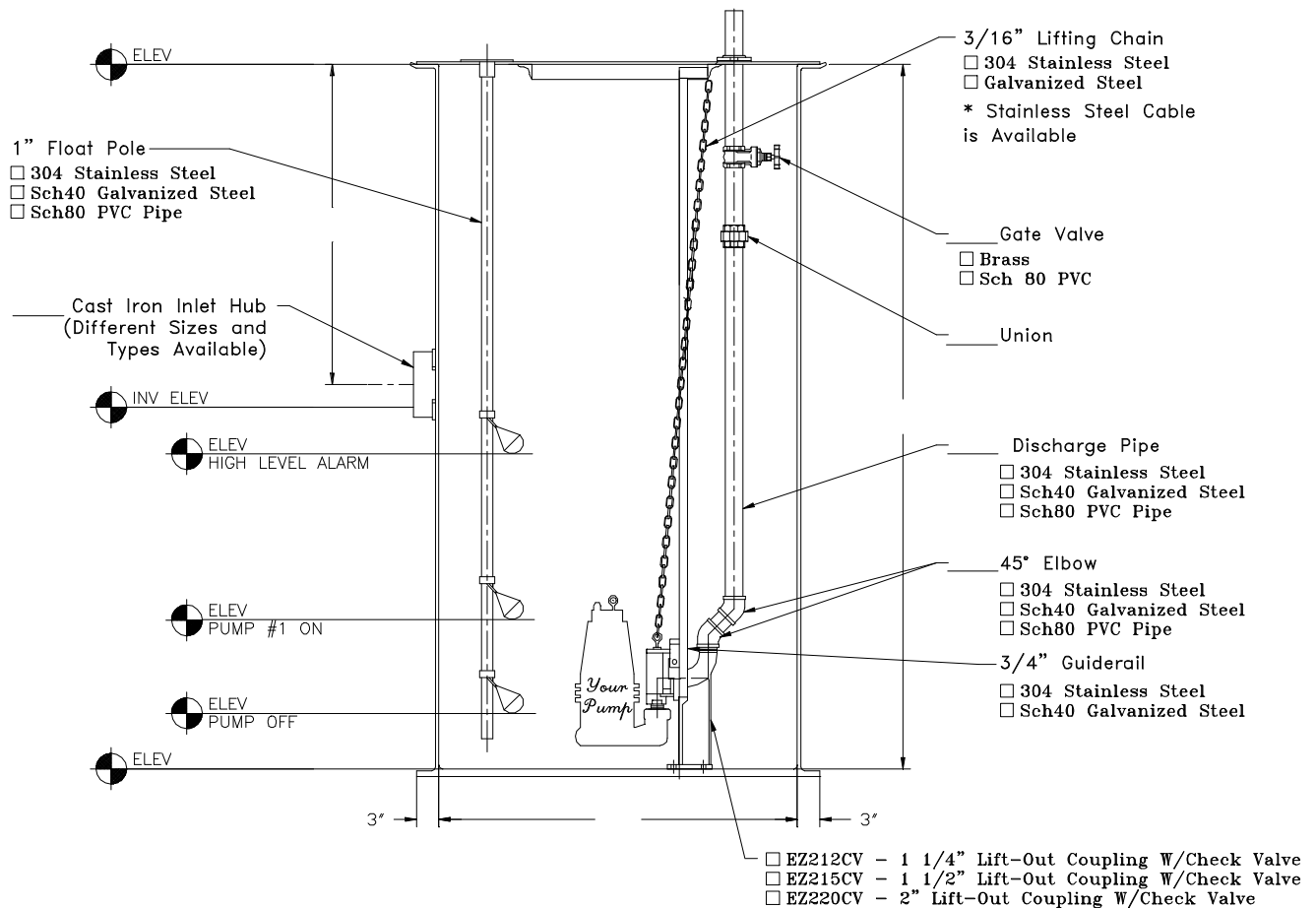
Anti-Floatation Flange  
☐ Fiberglass Encapsulated  
 ASTM A-36 Steel  
☐ Round Fiberglass  
☐ None

Inspection Plate  
 with (3) 1/2" Cord Grips and  
 1" Coupling



## Gas Tight Hatch Cover

☐ Fiberglass ☐ Aluminum ☐ Steel



**TOPP**  
 INDUSTRIES  
 INCORPORATED

EZ-Out With Check Valve  
 Prefabricated Fiberglass Lift  
 Station  
 Simplex - Top Discharge  
 With Valves

Highway 25 North P.O. Box 420  
 Rochester, IN 46975  
 Phone: 800/354-4534 Fax: 574/223-8106

Scale: None  
 Drawn By: KM  
 App'd By: .  
 Date: 04/21/03

Supersedes Prints  
 Prior To: 04/23/03

This print is and contains confidential proprietary information owned exclusively  
 by TOPP INDUSTRIES, INC. It is furnished on a strictly confidential basis. This  
 restriction includes, but is not limited to the condition that this print will not only  
 be used as a record or to identify or inspect parts or for other information purposes  
 and will not be used to manufacture or procure the manufacture of the items shown  
 in this print by any other source than TOPP INDUSTRIES, INC.

Reference  
 No: 16745

## Revisions

A	First Released.

# PUMP INFORMATION

Type: ☐ Sump Pump(s)

☐ Grinder Pump(s)

☐ Non-Clog Pump(s)

Model NO: \_\_\_\_\_

Rating: \_\_\_\_\_ GPM \_\_\_\_\_ TDH

Motor: \_\_\_\_\_ HP \_\_\_\_\_ RPM

Elec: \_\_\_\_\_ PH \_\_\_\_\_ HZ \_\_\_\_\_ v

Elec: \_\_\_\_\_ FL AMPS

## DISCHARGE PIPE

☐ 304 Stainless Steel

☐ Sch40 Galvanized Steel

☐ Sch80 PVC Pipe

☐ 1 1/4"

☐ 1 1/2"

☐ 2"

Anti-Floatation Flange

☐ Fiberglass Encapsulated

ASTM A-36 Steel

☐ Round Fiberglass

☐ None

Inspection Plate  
with (3) 1/2" Cord Grips and  
1" Coupling

3/4" Cord Grip

Discharge Flange

Vent  
Flange

## Gas Tight Hatch Cover

☐ Fiberglass ☐ Aluminum ☐ Steel

1" Float Pole

☐ 304 Stainless Steel

☐ Sch40 Galvanized Steel

☐ Sch80 PVC Pipe

Cast Iron Inlet Hub  
(Different Sizes and  
Types Available)

ELEV

INV ELEV

ELEV  
HIGH LEVEL ALARM

ELEV  
PUMP #1 ON

ELEV  
PUMP OFF

ELEV

3/16" Lifting Chain

☐ 304 Stainless Steel

☐ Galvanized Steel

\* Stainless Steel Cable  
is Available

Discharge Pipe

☐ 304 Stainless Steel

☐ Sch40 Galvanized Steel

☐ Sch80 PVC Pipe

45° Elbow

☐ 304 Stainless Steel

☐ Sch40 Galvanized Steel

☐ Sch80 PVC Pipe

3/4" Guiderail

☐ 304 Stainless Steel

☐ Sch40 Galvanized Steel

☐ EZ212CV - 1 1/4" Lift-Out Coupling W/Check Valve

☐ EZ215CV - 1 1/2" Lift-Out Coupling W/Check Valve


☐ EZ220CV - 2" Lift-Out Coupling W/Check Valve

**TOPP**  
INDUSTRIES  
INCORPORATED

EZ-Out With Check Valve  
Prefabricated Fiberglass Lift  
Station

Simplex - Top Discharge

Scale: None

Drawn By: 

App'd By: .

Date: 04/21/03

This print is and contains confidential proprietary information owned exclusively by TOPP INDUSTRIES, INC. It is furnished on a strictly confidential basis. This restriction includes, but is not limited to the condition that this print will not only be used as a record or to identify or inspect parts or for other information purposes and will not be used to manufacture or procure the manufacture of the items shown in this print by any other source than TOPP INDUSTRIES, INC.

Highway 25 North P.O. Box 420  
Rochester, IN 46975  
Phone: 800/354-4534 Fax: 574/223-6106

Supersedes Prints  
Prior To: 04/23/03

Reference  
No: 16746

## Revisions

A	First Released.

# PUMP INFORMATION

Type: ☐ Sump Pump(s)  
☐ Grinder Pump(s)  
☐ Non-Clog Pump(s)

Model NO: \_\_\_\_\_

Rating: \_\_\_\_\_ GPM \_\_\_\_\_ TDH

Motor: \_\_\_\_\_ HP \_\_\_\_\_ RPM

Elec: \_\_\_\_\_ PH \_\_\_\_\_ HZ \_\_\_\_\_ v

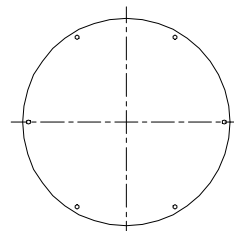
Elec: \_\_\_\_\_ FL AMPS

## DISCHARGE PIPE

☐ 3" 304 Stainless Steel  
☐ 3" Sch40 Galvanized Steel  
☐ 3" Sch80 PVC Pipe

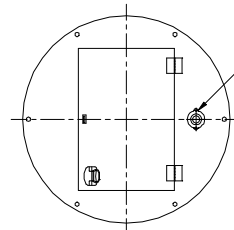
Anti-Floatation Flange

☐ Fiberglass Encapsulated  
 ASTM A-36 Steel  
☐ Round Fiberglass  
☐ None



Solid Cover

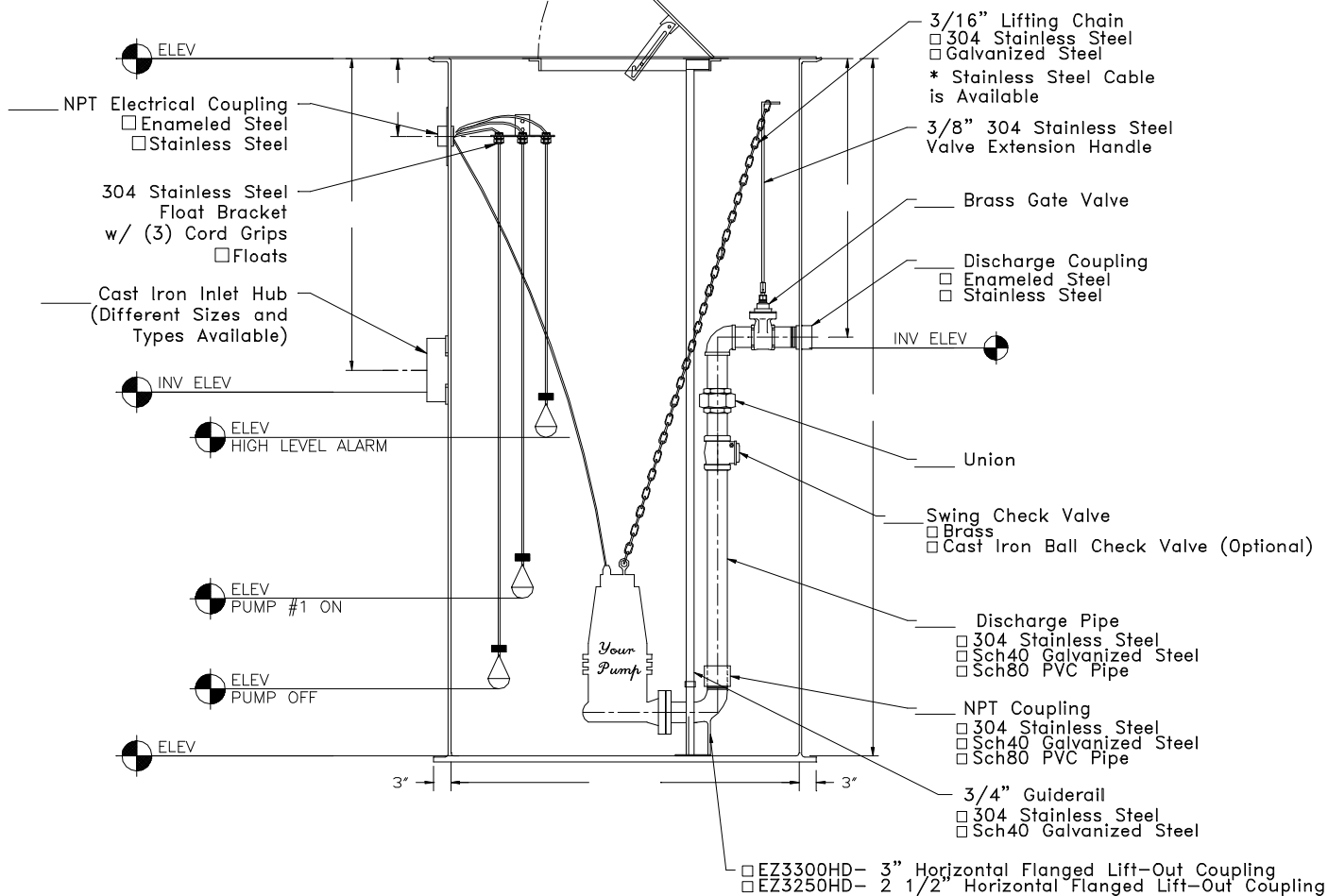
☐ Fiberglass  
☐ Steel



Vent Flange

Hinged and Lockable Cover

☐ Fiberglass ☐ Aluminum ☐ Steel



**TOPP INDUSTRIES**  
**INCORPORATED**

EZ-Out Prefabricated  
 Fiberglass Lift Station  
 Simplex-EZ3300HD-EZ3250HD  
 Side Discharge

Highway 25 North P.O. Box 420  
 Rochester, IN 46975  
 Phone: 800/354-4534 Fax: 574/223-6106

Scale: None  
 Drawn By: RM  
 App'd By: .  
 Date: 04/21/03

Supersedes Prints  
 Prior To: 04/21/03

This print is and contains confidential proprietary information owned exclusively by TOPP INDUSTRIES, INC. It is furnished on a strictly confidential basis. This restriction includes, but is not limited to the condition that this print will not only be used as a record or to identify or inspect parts or for other information purposes and will not be used to manufacture or procure the manufacture of the items shown in this print by any other source than TOPP INDUSTRIES, INC.

Reference No: 16761

## Revisions

A	First Released.

# PUMP INFORMATION

Type: ☐ Sump Pump(s)  
☐ Grinder Pump(s)  
☐ Non-Clog Pump(s)

Model NO: \_\_\_\_\_

Rating: \_\_\_\_\_ GPM \_\_\_\_\_ TDH

Motor: \_\_\_\_\_ HP \_\_\_\_\_ RPM

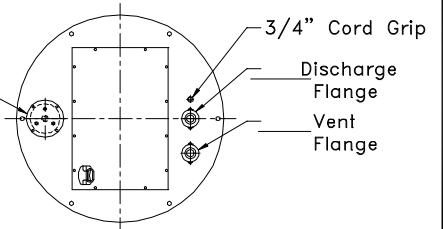
Elec: \_\_\_\_\_ PH \_\_\_\_\_ HZ \_\_\_\_\_ v

Elec: \_\_\_\_\_ FL AMPS

## DISCHARGE PIPE

☐ 3" 304 Stainless Steel  
☐ 3" Sch40 Galvanized Steel  
☐ 3" Sch80 PVC Pipe

Inspection Plate  
 with (3) 1/2" Cord Grips and  
 1" Coupling



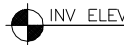
## Gas Tight Hatch Cover

☐ Fiberglass ☐ Aluminum ☐ Steel

Anti-Floatation Flange  
☐ Fiberglass Encapsulated  
 ASTM A-36 Steel  
☐ Round Fiberglass  
☐ None

1" Float Pole  
☐ 304 Stainless Steel  
☐ Sch40 Galvanized Steel  
☐ Sch80 PVC Pipe

Cast Iron Inlet Hub  
 (Different Sizes and  
 Types Available)



3'

3/16" Lifting Chain  
☐ 304 Stainless Steel  
☐ Galvanized Steel  
 \* Stainless Steel Cable  
 is Available

Brass Gate Valve

Union

Swing Check Valve  
☐ Brass  
☐ Cast Iron Ball Check Valve (Optional)

Discharge Pipe  
☐ 304 Stainless Steel  
☐ Sch40 Galvanized Steel  
☐ Sch80 PVC Pipe

45° Elbows  
☐ 304 Stainless Steel  
☐ Sch40 Galvanized Steel  
☐ Sch80 PVC Pipe

3/4" Guiderail  
☐ 304 Stainless Steel  
☐ Sch40 Galvanized Steel

☐ EZ3300HD- 3" Horizontal Flanged Lift-Out Coupling  
☐ EZ3250HD- 2 1/2" Horizontal Flanged Lift-Out Coupling

**INDUSTRIES**  
**TOPP**  
 INCORPORATED

EZ-Out Prefabricated  
 Fiberglass Lift Station  
 Simplex-EZ3300HD-EZ3250HD  
 Top Discharge

Highway 25 North P.O. Box 420  
 Rochester, IN 46975  
 Phone: 800/354-4534 Fax: 574/223-8106

Scale: None

Drawn By: RM

App'd By: .

Date: 04/21/03

Supersedes Prints  
 Prior To: 04/21/03

This print is and contains confidential proprietary information owned exclusively by TOPP INDUSTRIES, INC. It is furnished on a strictly confidential basis. This restriction includes, but is not limited to the condition that this print will not only be used as a record or to identify or inspect parts or for other information purposes and will not be used to manufacture or procure the manufacture of the items shown in this print by any other source than TOPP INDUSTRIES, INC.

Reference  
 No: 16762

## Revisions

A	First Released.

# PUMP INFORMATION

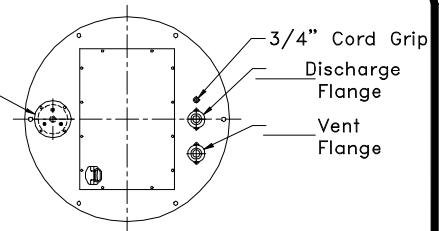
Type: ☐ Sump Pump(s)  
☐ Grinder Pump(s)  
☐ Non-Clog Pump(s)

Model NO: \_\_\_\_\_  
 Rating: \_\_\_\_\_ GPM \_\_\_\_\_ TDH  
 Motor: \_\_\_\_\_ HP \_\_\_\_\_ RPM  
 Elec: \_\_\_\_\_ PH \_\_\_\_\_ HZ \_\_\_\_\_ v  
 Elec: \_\_\_\_\_ FL AMPS

## DISCHARGE PIPE

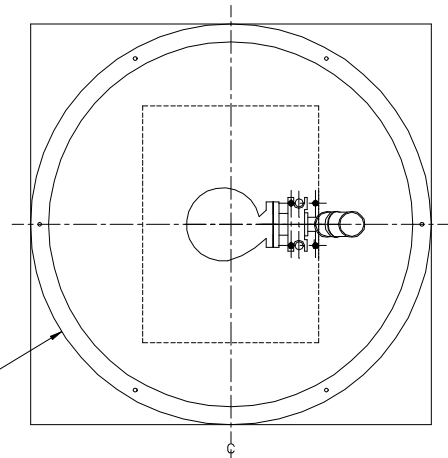
☐ 3" 304 Stainless Steel  
☐ 3" Sch40 Galvanized Steel  
☐ 3" Sch80 PVC Pipe

Inspection Plate  
 with (3) 1/2" Cord Grips and  
 1" Coupling

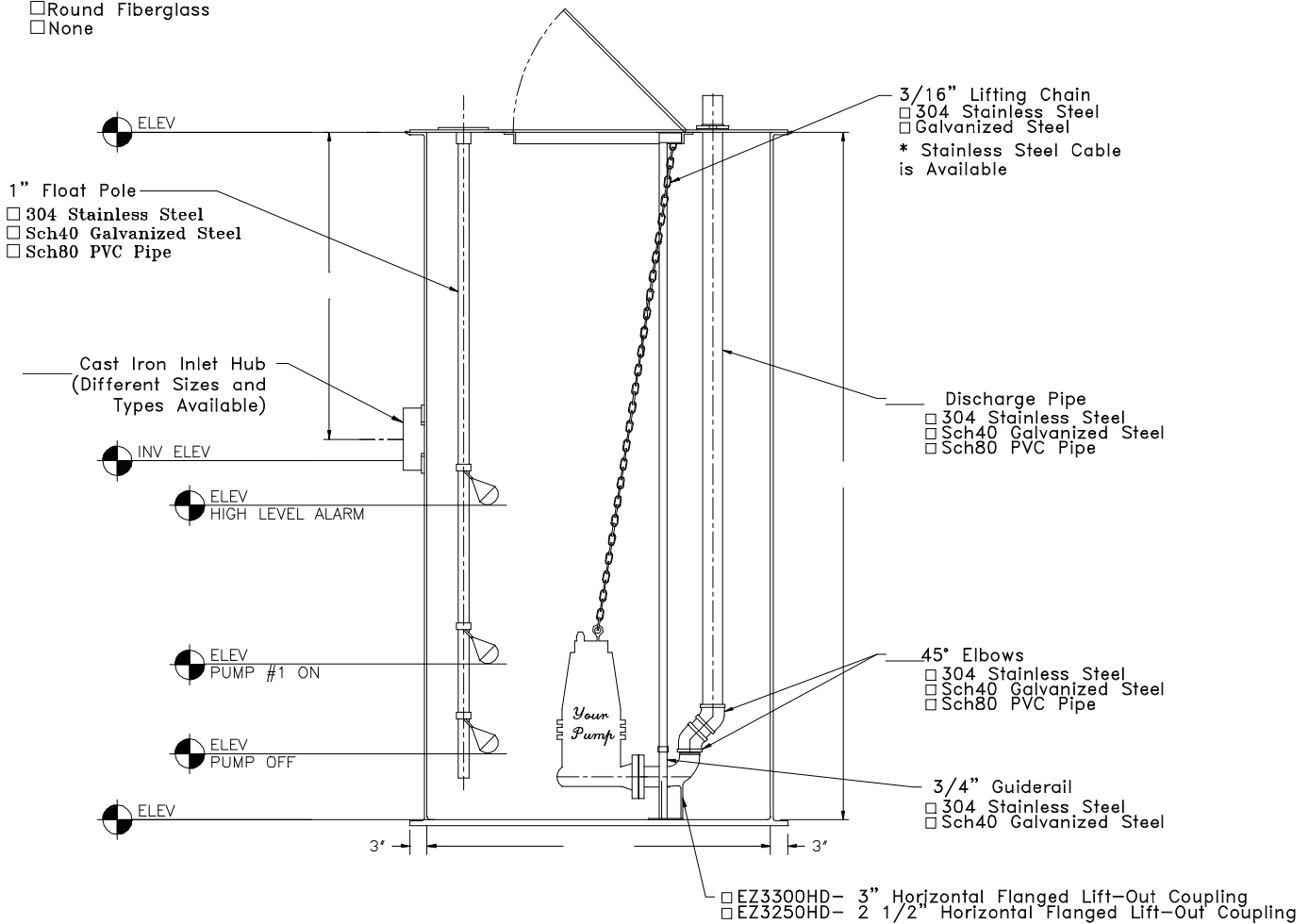


Gas Tight Hatch Cover

☐ Fiberglass ☐ Aluminum ☐ Steel



Anti-Floatation Flange  
☐ Fiberglass Encapsulated  
 ASTM A-36 Steel  
☐ Round Fiberglass  
☐ None



**TOPP**  
 INDUSTRIES  
 INCORPORATED

EZ-Out Prefabricated  
 Fiberglass Lift Station  
 Duplex-EZ3300HD-EZ3250HD  
 Top Discharge No Valves

Highway 25 North P.O. Box 420  
 Rochester, IN 46975  
 Phone: 800/354-4534 Fax: 574/223-6106

Scale: None  
 Drawn By: RM  
 App'd By: .  
 Date: 04/21/03

Supersedes Prints  
 Prior To: 04/21/03

This print is and contains confidential proprietary information owned exclusively  
 by TOPP INDUSTRIES, INC. It is furnished on a strictly confidential basis. This  
 restriction includes, but is not limited to the condition that this print will not only  
 be used as a record or to identify or inspect parts or for other information purposes  
 and will not be used to manufacture or procure the manufacture of the items shown  
 in this print by any other source than TOPP INDUSTRIES, INC.

Reference  
 No: 16763

## Revisions

A	First Released.

# PUMP INFORMATION

Type: ☐ Sump Pump(s)  
☐ Grinder Pump(s)  
☐ Non-Clog Pump(s)

Model NO: \_\_\_\_\_

Rating: \_\_\_\_\_ GPM \_\_\_\_\_ TDH

Motor: \_\_\_\_\_ HP \_\_\_\_\_ RPM

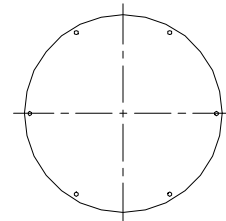
Elec: \_\_\_\_\_ PH \_\_\_\_\_ HZ \_\_\_\_\_ v

Elec: \_\_\_\_\_ FL AMPS

## DISCHARGE PIPE

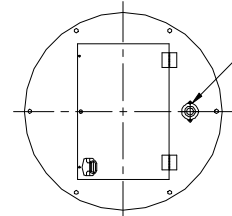
☐ 304 Stainless Steel  
☐ Sch40 Galvanized Steel  
☐ Sch80 PVC Pipe  
☐ 1 1/4"  
☐ 2"

Anti-Floatation Flange  
☐ Fiberglass Encapsulated  
 ASTM A-36 Steel  
☐ Round Fiberglass  
☐ None



Solid Cover

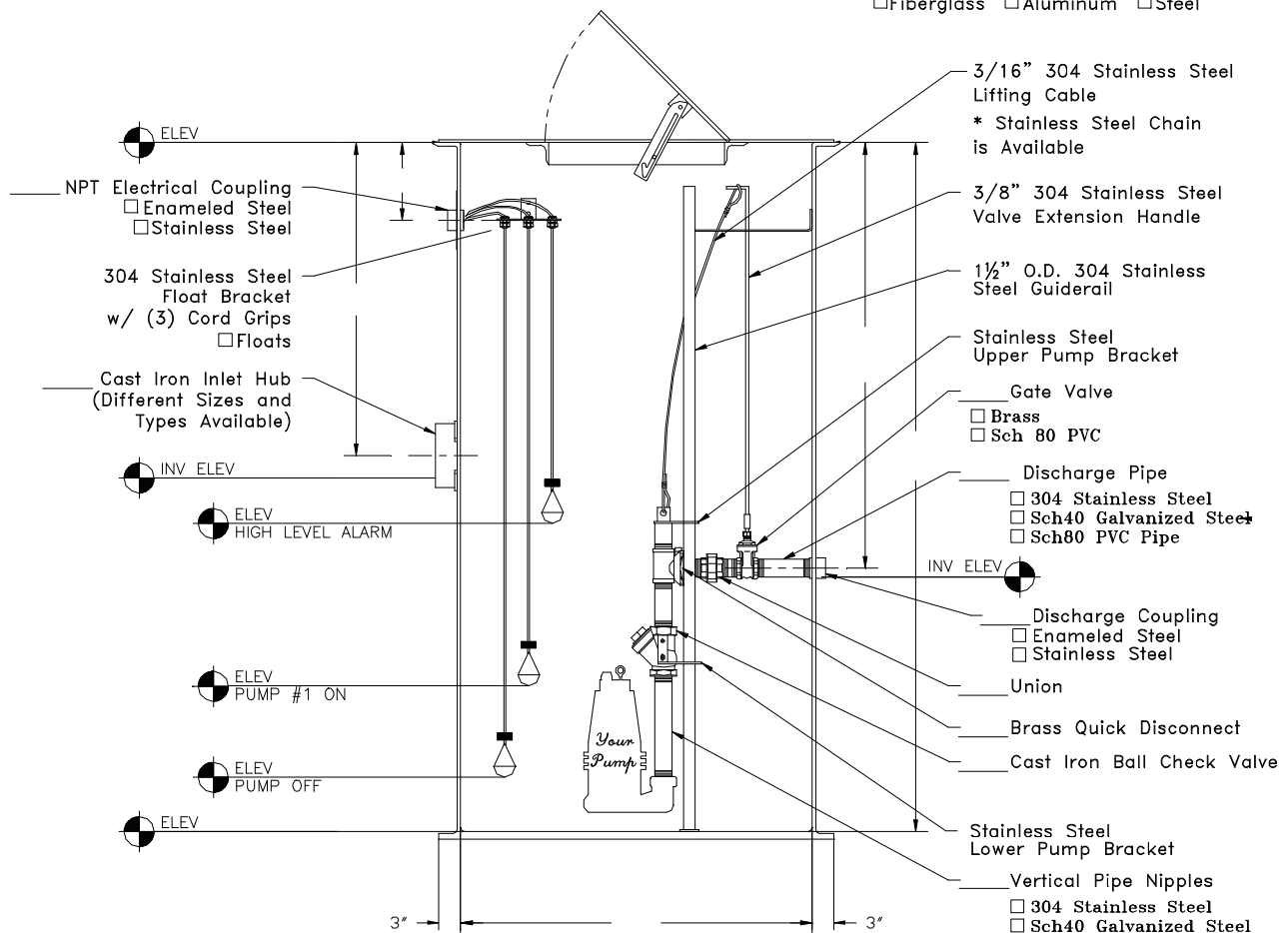
☐ Fiberglass  
☐ Steel



NPT Vent  
 Flange

Hinged and Lockable Cover

☐ Fiberglass ☐ Aluminum ☐ Steel



**INDUSTRIES**  
**TOPP**  
 INCORPORATED

Prefabricated Fiberglass  
 Lift Station

Reference: Simplex SGR  
 Standard Discharge

Highway 25 North P.O. Box 420  
 Rochester, IN 46975  
 Phone: 800/354-4534 Fax: 574/223-6106

Scale: None

Drawn By: RM

App'd By: .

Date: 05/30/03

Supersedes Prints  
 Prior To: 05/30/03

This print is and contains confidential proprietary information owned exclusively by TOPP INDUSTRIES, INC. It is furnished on a strictly confidential basis. This restriction includes, but is not limited to the condition that this print will not only be used as a record or to identify or inspect parts or for other information purposes and will not be used to manufacture or procure the manufacture of the items shown in this print by any other source than TOPP INDUSTRIES, INC.

Reference No: 16838

## Revisions

①	First Released.